

By Design

DESIGN INTERIORS 2022



ISSUE 3 | SEPTEMBER 2022



Designer: Benjamin Mulholland



Editor's Note

They say that it's what's on the inside that counts, and for today's top designers, making the inside count is an integral part of their task and craft.

Whether it's a home, a business, a school, a house of worship, a retail store, or hospitality business, just the right interior can be a thing of beauty, along with doing much to establish the identity of their subject space, in a way that is functional, sustainable and pleasing to the eye.

In this edition of By Design magazine, we take a look at Interiors; from their commercial value to their endless high tech functionality, to their rich sustainable essence and their endless, timeless beauty. From the magic of biophilic design, which brings the outdoors in, to the high tech artistry of home theaters, to the way that we are reimagining our schools and workspaces in a changed world, to revolutionary retail and storefront designs, we will present a vast spectrum of excellent interiors sure to impress and inspire. We will show you award-winning designs and bring you expert insights from designers at the top of their game. And we will offer market insights regarding the design industry and state of the built environment as a whole.

By Design magazine is a full-color quarterly magazine, a publication of the Building Designers Association of Australia. Our members and industry partners play vital roles in the production of this publication, a signature journal that covers any and all aspects of modern design. Please enjoy this special edition of By Design: Interiors, and get in touch with us with any questions or ideas for future editions.

Cover: Mary Kolivas by Inside Touch Interiors
Photographer: Pablo Veiga Photography



TABLE OF CONTENT

3 Editor's note

6 National Residential Building

24 Why it's time to go monochrome

24 How a showroom becomes a showplaces

40 Inner Sanctuary with Weathertex... Naturally

46 LUXPVD provides superior finish

52 Design inspired

58 Assisted Living

60 Psychological and Somatic Interiors

64 Evading a perfect storm

70 From render to reality

78 Biophilic design

82 Bombshell blow dry bar

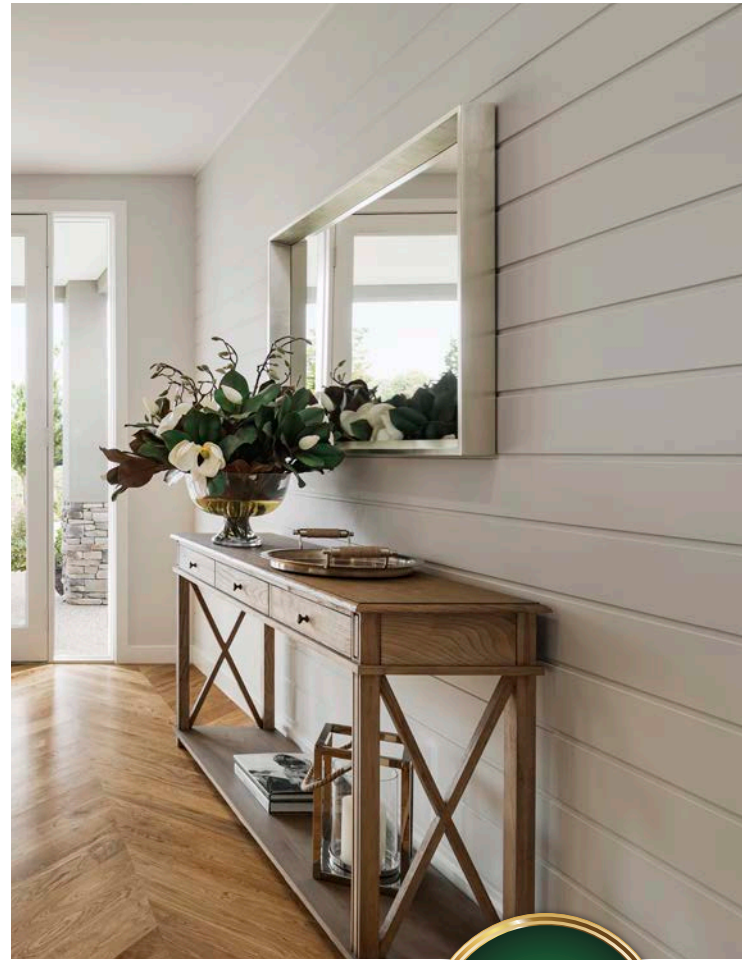
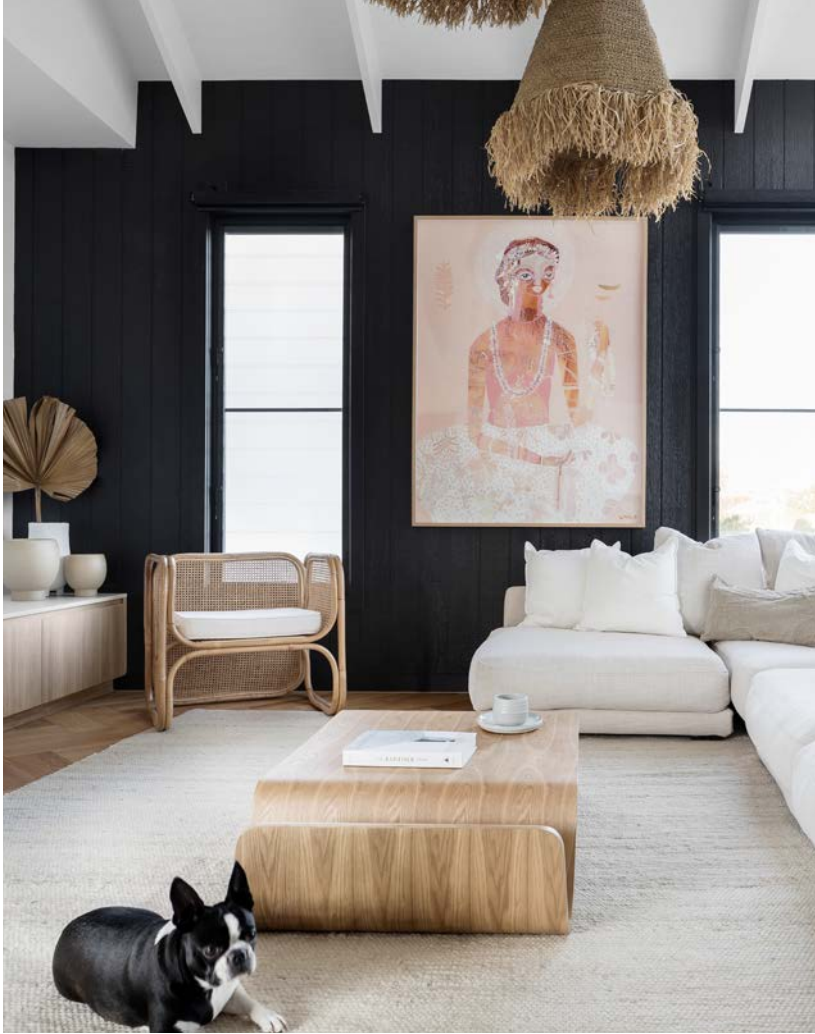
88 Why timber lighting?

93 What is smart home automation?

96 Everybody loves going to the cinema!

100 Large windows brings the outside in

108 References



Whatever design and style

 **weathertex** is the better choice, naturally

National Residential Building

Residential Building is being supported by a surge in demand. This is evident from robust housing market fundamentals, especially in large jumps in dwelling prices over most of 2021 across Australia and in most capital cities.

Record low interest rates and stimulatory housing policy incentives from Commonwealth, State and Territory Governments, including the HomeBuilder program, other incentives and stamp duty reductions for first home buyers, have played a significant role.

Residential Building approvals surged by 28% over the 2021 calendar year, while commencements lifted by 25%. This was a very steep and large wave to wash over the industry.

It has been impossible for the industry to absorb the spike in demand for Residential Building work – both in new dwellings as well as in alterations and additions – in one year. Much of this will spill over into the remainder of 2021-22 and into 2022-23.

While there is growth in work to be done by the industry there is also growth in the risks and challenges being faced by the industry.

Builders draw attention to disruptions in the supply chain that is raising shortages in key materials (timber, steel and electrical equipment components). There are also reports of shortages in skilled trades. This is being reflected in sharp increases in costs. Delays and price increases are likely.

The RBA has commenced increases in the cash rate and further increases are expected. This will impact on demand (with a lag) as well as increase the cost of funds for builders.

“While there is growth in work to be done by the industry there is also growth in the risks and challenges being faced by the industry.”

Many builders and allied professionals warn of a period of “profitless growth” ahead.

There is still considerable uncertainty about the lingering or structural changes that will result from the pandemic. The ability to work from home (WFH) and changing preferences for outer-city, spacious and detached housing may limit demand and growth in apartment construction in coming years. Offsetting this is the arrival of build to rent dwellings that will provide more affordable dwellings with greater amenities.

It is not clear when Australia will return to ‘normal’ levels of population growth, and whether or if it will return to previous levels of immigration.



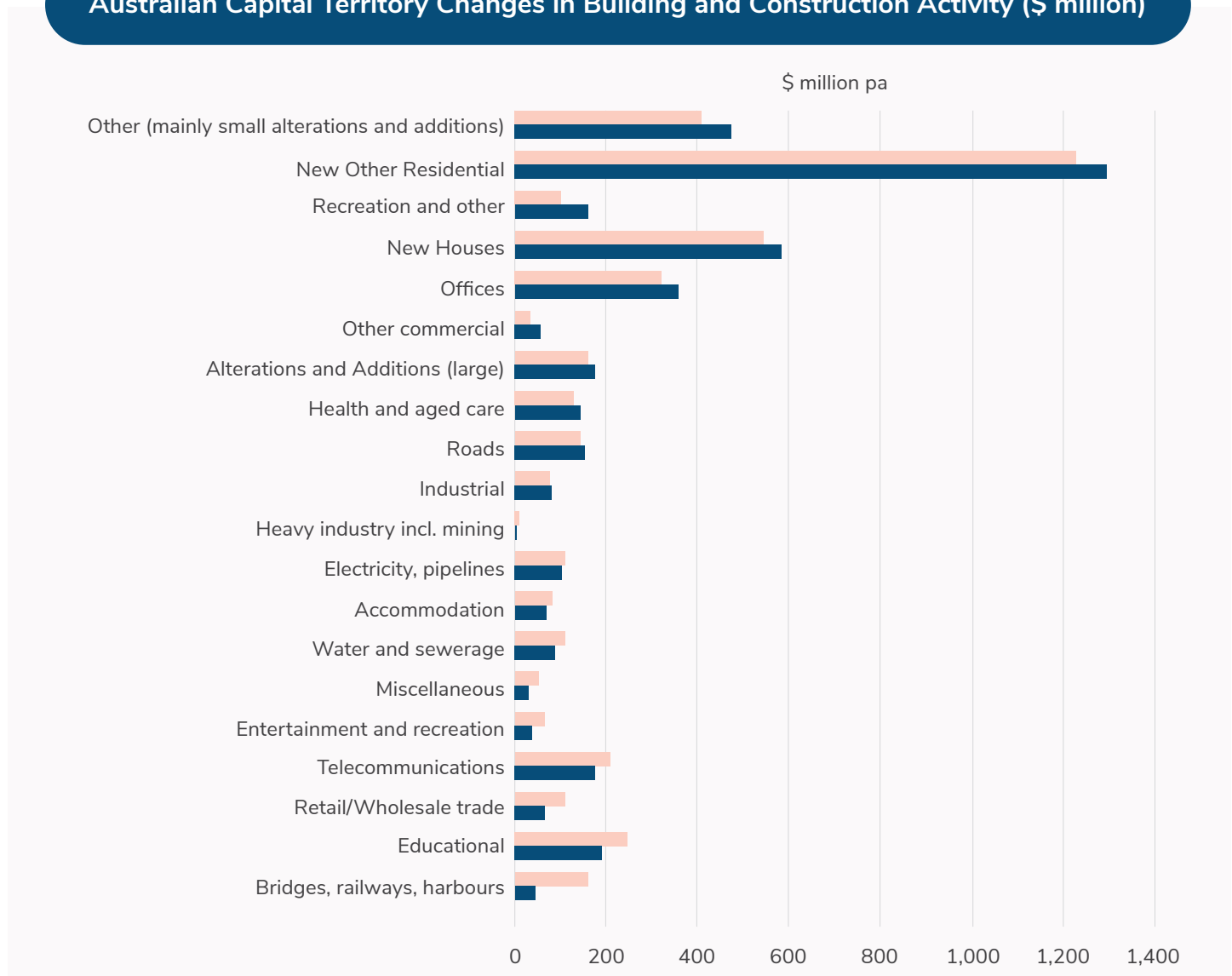
Australian Capital Territory

Australian Capital Territory Changes in Building and Construction Activity

A mix of construction sectors are expected to increase over the next five years. The top performing sub-sectors are expected to be in Recreation and Other, New Other Residential (Apartments and Townhouses) and Other (Mainly Small Alterations and Additions).

Sectors expected to see the largest declines in the next five years relative to the last five years are Bridges, Railways and Harbours (reflecting a slowdown in the roll-out of the Light Rail project), Education and Retail and Wholesale Trade (reflecting the long-term trend decline in physical buildings and the increasing dominance of e-commerce).

Australian Capital Territory Changes in Building and Construction Activity (\$ million)



■ Average last 5 years
 ■ Average next 5 years

Source: ABS and ACIF CFC

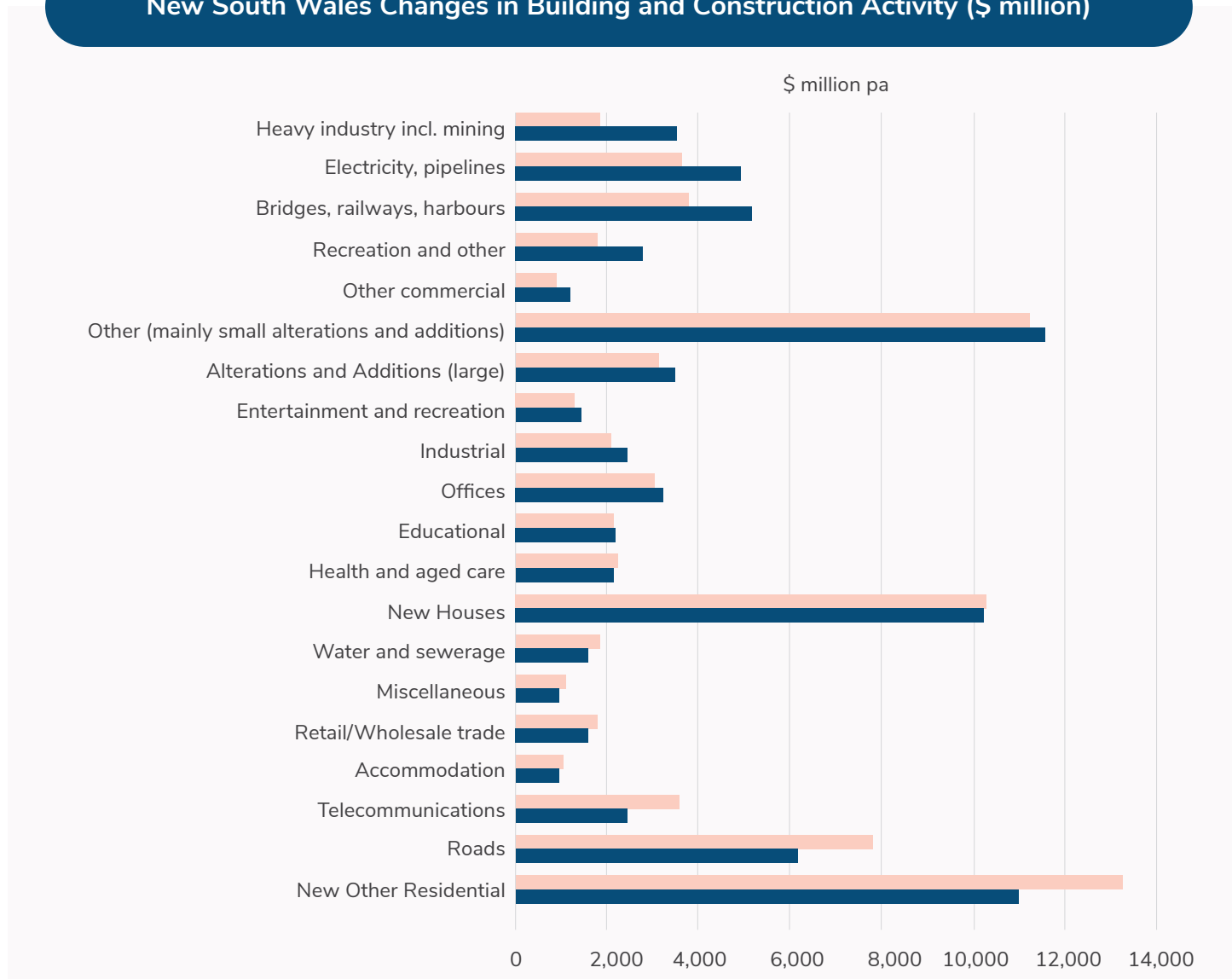


New South Wales

New South Wales Changes in Building and Construction Activity

Sub-sectors which are expected to see an increase in work done over the next five years are at the top. This is topped off by investments in Engineering Construction especially in Heavy Industry including Mining, Electricity and Pipelines, Bridges, Railways and Harbours, and Recreation and Other (especially stadiums and similar large-scale facilities). Sub-sectors which are expected to see a contraction in work over the next five years relative to the last five years are at the bottom of this chart. Sub-sectors which are expected to see the largest contraction in work done over the next five years are Accommodation, New Other Residential (Apartments and Townhouses), Telecommunications, and Roads. New Other Residential is at the bottom end of the chart reflecting the view that the recovery in prospect is not expected to drive workloads to levels seen at the peak of the housing boom.

New South Wales Changes in Building and Construction Activity (\$ million)



Legend: Average last 5 years (light orange), Average next 5 years (dark blue)

Source: ABS and ACIF CFC



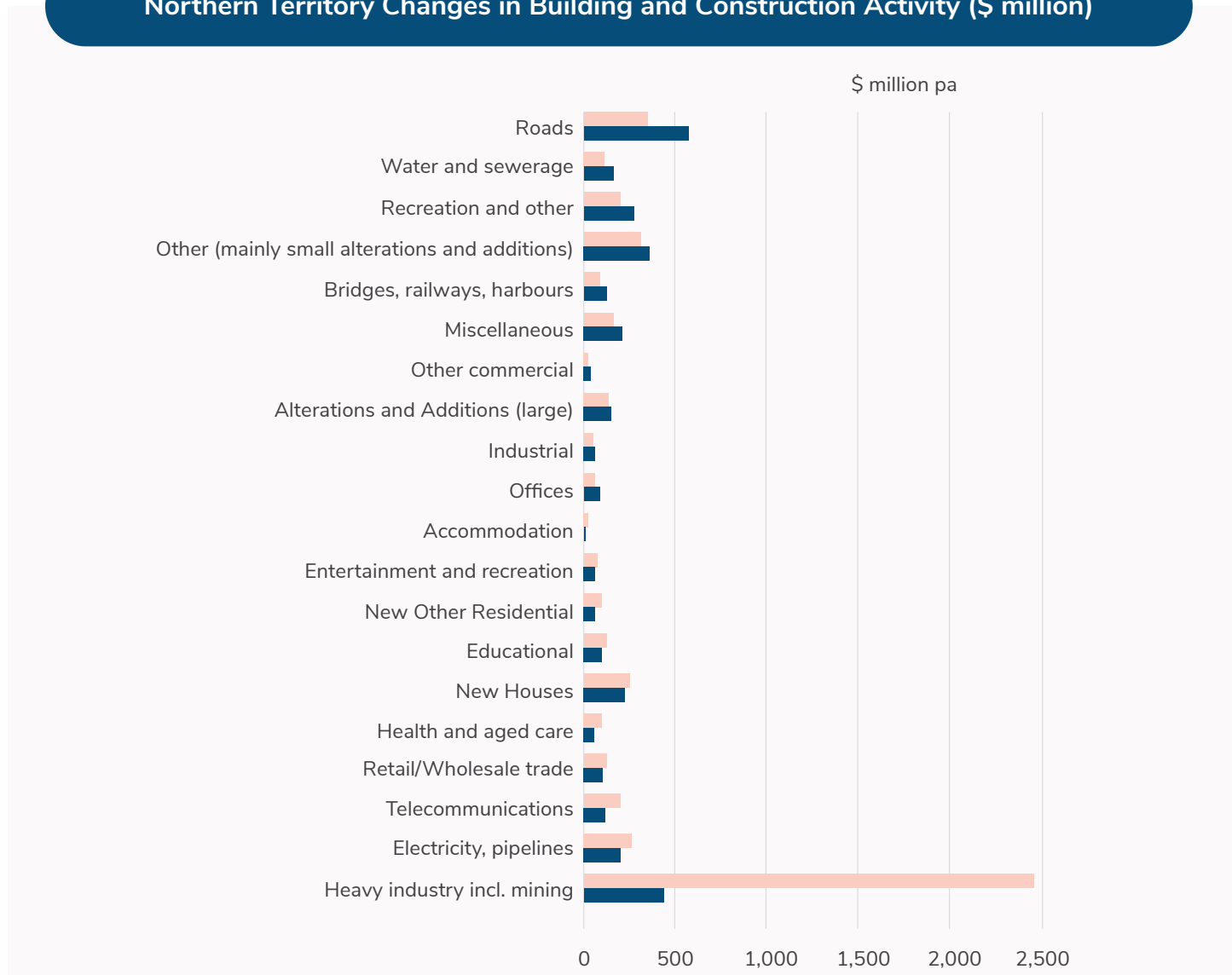
Northern Territory

Northern Territory Changes in Building and Construction Activity

The largest sector by far (historically) is the Heavy Industry including Mining sector. This sector averaged work done of nearly \$2.5 billion over the last five years. This is projected to reduce to an average of around \$500 million over the coming five years. This places the sector behind Roads, where strong growth is forecast over the next five years, relative to the last five.

Construction activity in the Water and Sewerage and Recreation and Other sectors are expected to grow more strongly in the next five years, but the change is fairly modest and difficult to discern given the dominance of swings in other sectors, especially in mining.

Northern Territory Changes in Building and Construction Activity (\$ million)



■ Average last 5 years
 ■ Average next 5 years

Source: ABS and ACIF CFC



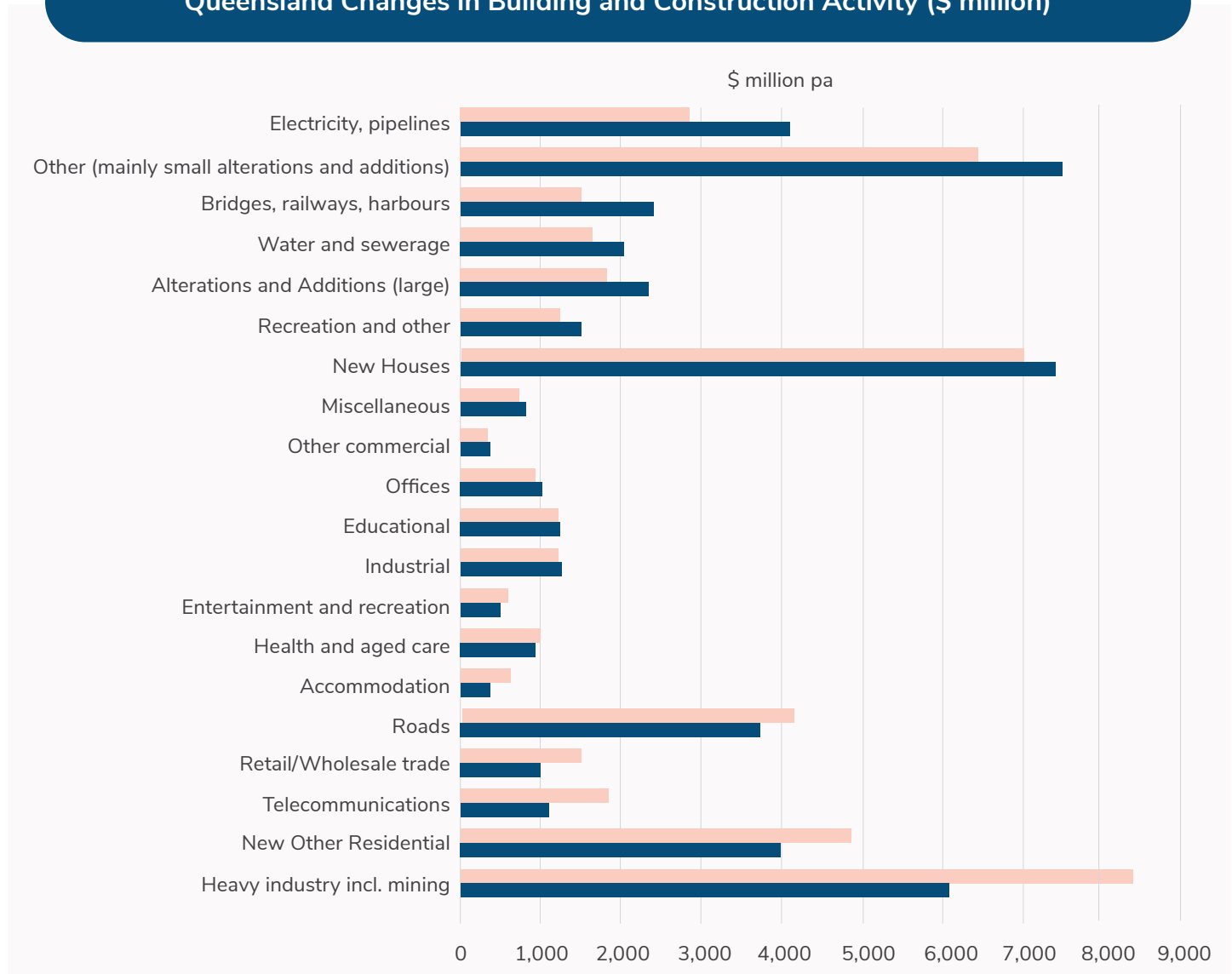
Queensland

Queensland Changes in Building and Construction Activity

The biggest gains over the next five years are in Other (Mainly Small Alterations and Additions), Bridges, Railways and Harbours and Electricity and Pipelines, as a combination of the strong infrastructure pipeline and continued stimulus in the residential sector drive activity.

The most significant downturn is expected to be in Heavy Industry including Mining, in spite of a modest rebound forecast in 2022-23 and beyond, New Other Residential, which has not shared in the residential boom like the other three sub-sectors and Telecommunications. Telecommunications continues to show softness from the heights of the NBN construction.

Queensland Changes in Building and Construction Activity (\$ million)



Legend: Average last 5 years (light orange), Average next 5 years (dark blue)

Source: ABS and ACIF CFC



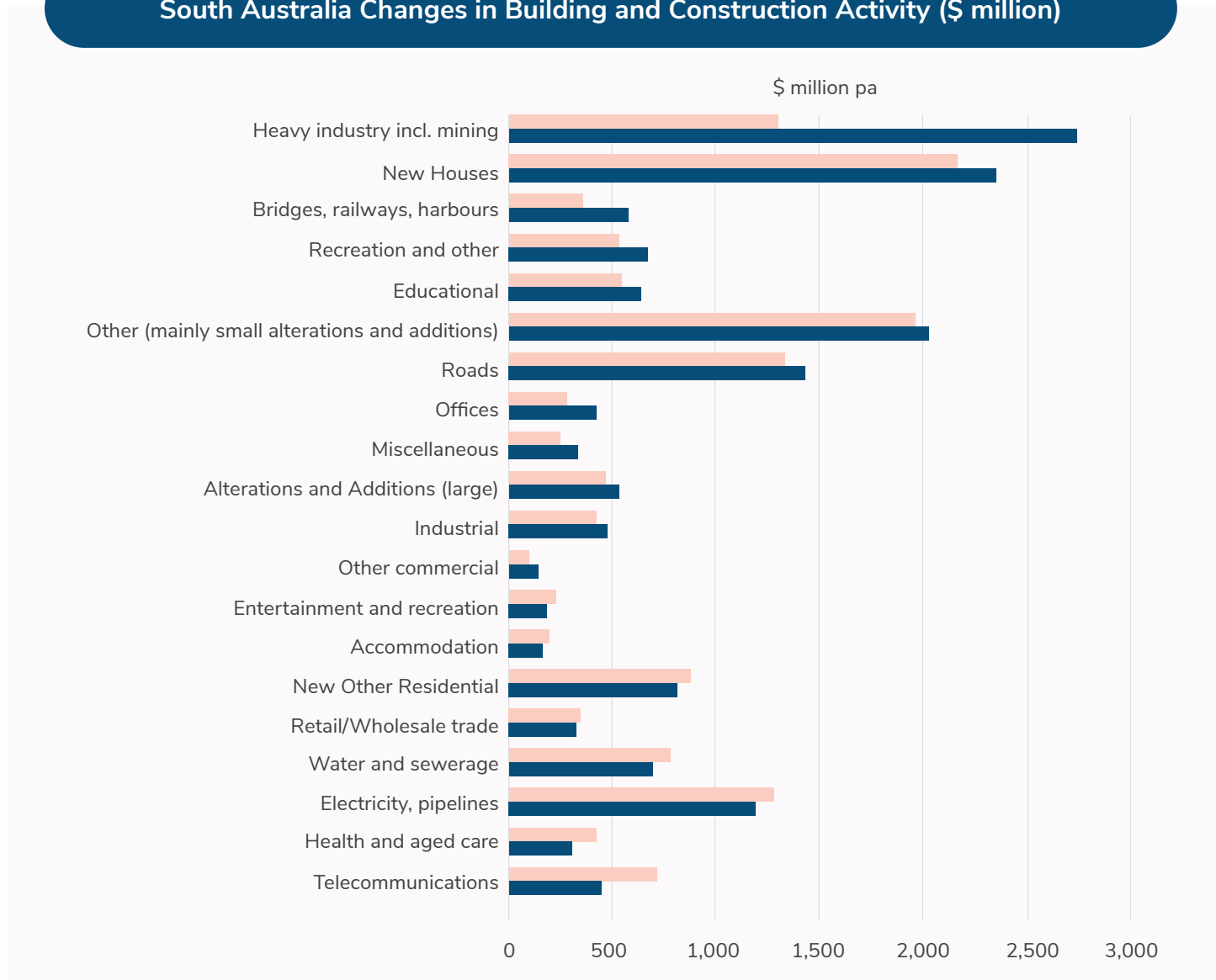
South Australia

South Australia Changes in Building and Construction Activity

Activity is forecast to increase in value in Recreation and Other; however, this forecast is expected to be impacted by the decision to not proceed with the high-value Riverbank Arena project. Education is also expected to increase, with a number of projects proposed at Flinders University.

New Houses, Large Alterations and Additions, and Other (Mainly Small Alterations and Additions) are also expected to increase in value, whereas New Other Residential (Apartments and Townhouses) is expected to decline slightly overall when compared to average activity over the previous five years.

South Australia Changes in Building and Construction Activity (\$ million)



■ Average last 5 years
 ■ Average next 5 years

Source: ABS and ACIF CFC



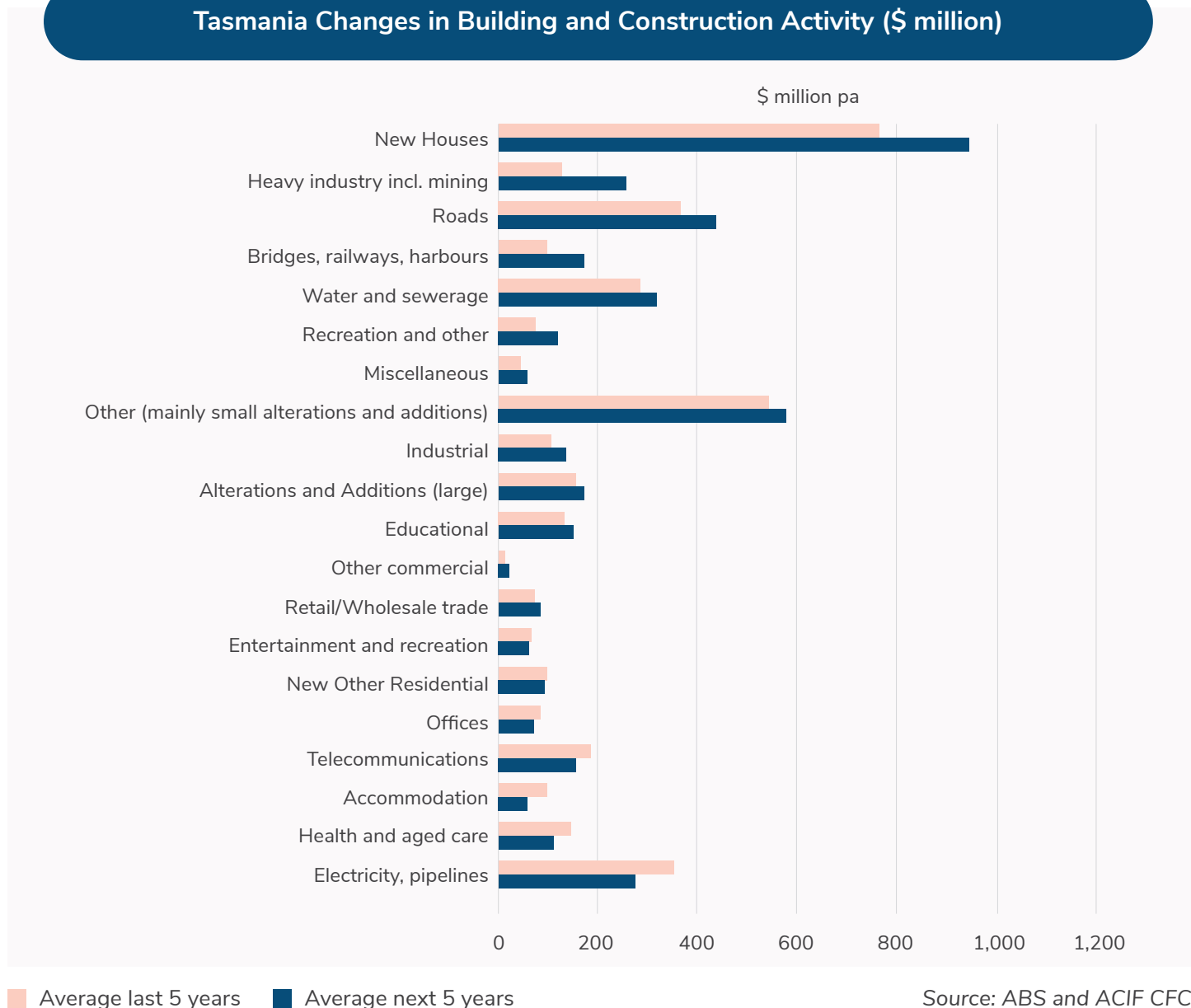
Tasmania

Tasmania State Changes in Building and Construction Activity

Construction activity in Tasmania’s New Houses, Heavy Industry including Mining, Bridges, Railways and Harbours, and Roads sectors are expected to perform more strongly over the next five years, relative to the last five.

Over the next five years the sectors set to see the biggest contraction in construction are Telecommunications, Accommodation, Electricity and Pipelines, Other New Residential (Apartments and Townhouses), Health and Aged Care construction sectors.

Tasmania Changes in Building and Construction Activity (\$ million)





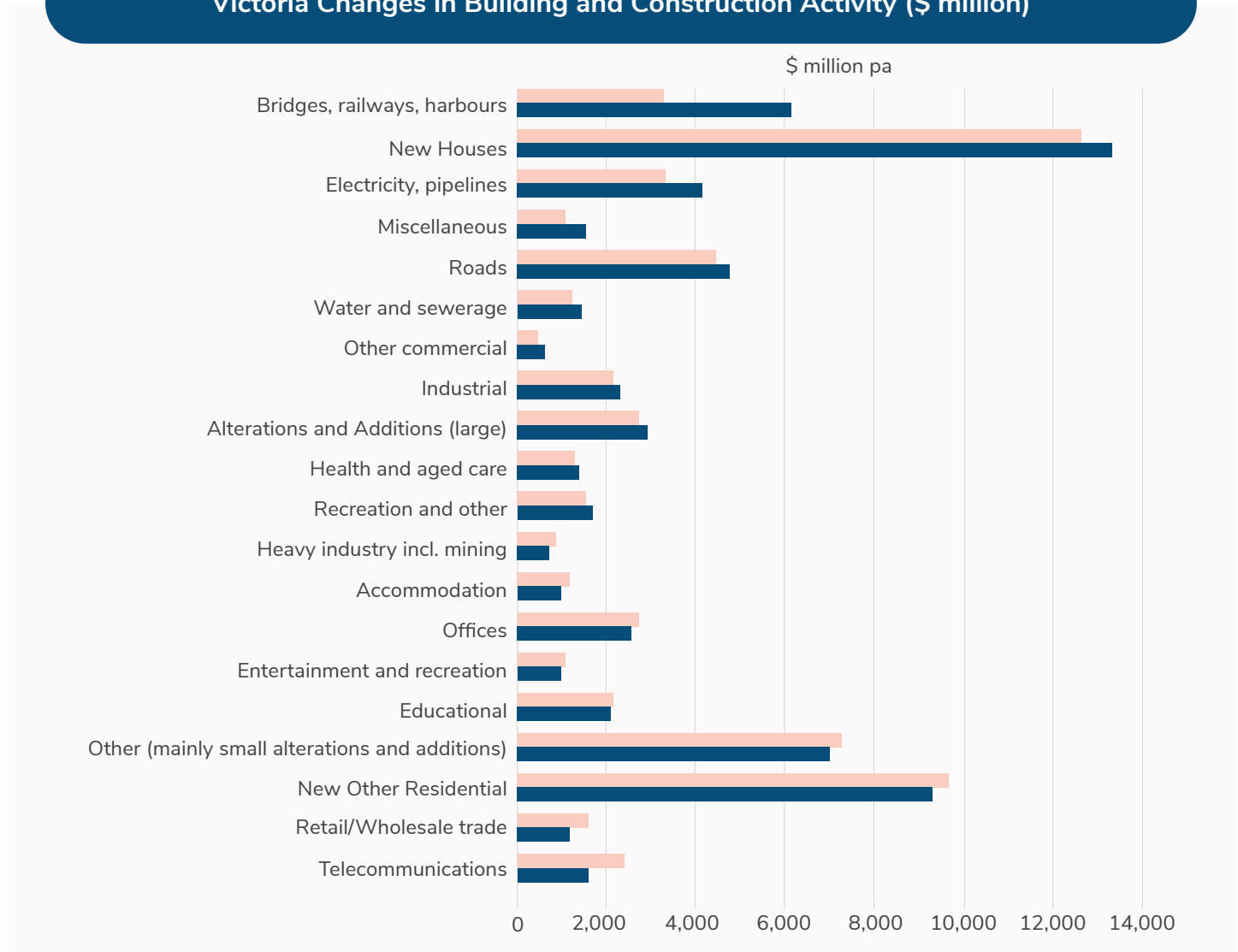
Victoria

Victoria Changes in Building and Construction Activity

Infrastructure categories Bridges, Railways and Harbours, Roads, and Electricity and Pipelines are expected to gain large increases in the value of work done in the next five years, benefiting from the expanded infrastructure spend in the pipeline from Victoria’s “Big Build”. Changes in Electricity and Pipelines will be influenced by the progress made on a number of new solar farms, wind farms and renewable energy hubs in the short to medium term, a number of which are currently in the early planning or development approval stages.

New Houses is also expected to increase, as the cyclical downturn in Residential Building is reversed. Conversely, New Other Residential (Apartments and Townhouses) is expected to lose value over the next five years.

Victoria Changes in Building and Construction Activity (\$ million)



Legend: Average last 5 years (light orange), Average next 5 years (dark blue)

Source: ABS and ACIF CFC

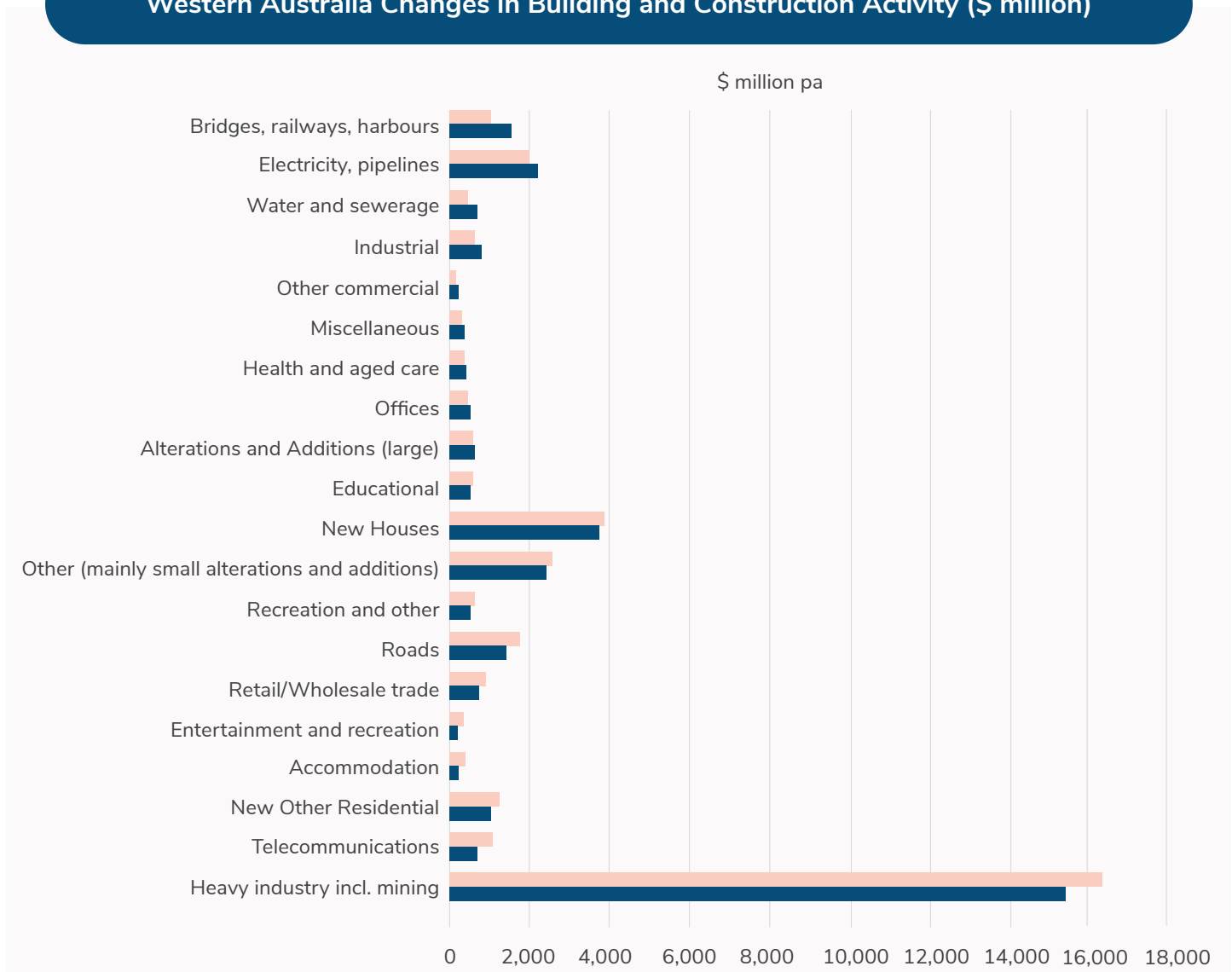


Western Australia

Western Australia Changes in Building and Construction Activity

Sub-sectors which are expected to see a contraction in work over the next five years relative to the last five years are at the bottom of this chart. Sub-sectors which are expected to see the largest contraction in work done over the next five years are Heavy Industry including Mining, New Other Residential (Apartments and Townhouses), Telecommunications, and Accommodation. As shown mining dominates all other industries in the chart, as it dominates the economy in Western Australia. This set of forecasts has factored in that the long run decline bottomed out last year and we are now projecting growth in activity. While significant, this growth will not be sufficient to return the sector to where it was over the mining boom. This is the reason for the decline shown in the chart.

Western Australia Changes in Building and Construction Activity (\$ million)



Legend: Average last 5 years (light orange), Average next 5 years (dark blue)

Source: ABS and ACIF CFC



WHY IT'S TIME TO GO

Monochrome





Designer: Amani Salameh

When it comes to redesigning a room, the first decision is usually, “which color?”

And sometimes, that can be the hardest choice of all. I can't be the only person who has excitedly walked into a paint store, then left a short time later, overwhelmed with a thousand similar-but-different options. Who knew there could be so many shades of white? And where do I even begin with furniture?

Here's one way we bypass having to coordinate colors: designing a room with a monochromatic color palette. It's an incredibly simple way to bring elegance to your interiors without hiring a designer. And it's becoming increasingly popular in interior design.

In this article, we'll outline why using a single color palette is an excellent choice for any interior, and show you how to recreate the look on your own. We think you'll be eager to embrace monochrome in no time.

All you have to do is decide which color!

Why go for monochrome?

Monochrome easily creates harmony — because it's really all one base color.

By choosing a monochromatic color palette, you have your unifying element from the start. 'Monochromatic' simply means is that you take one basic color and apply color theory to create a range of hues by playing with the various tones, shades, and tints that can be created from the original.

For those of us who are starting to experiment with interior design, the prospect of putting an entire room together can be daunting. After all, there are so many different components to take into account: furniture, floor coverings — don't even get me started on art and decor. Going monochrome will guide your decisions, and pull everything together seamlessly.

But shouldn't design have lots of different colors?

Yes and no. By now, we're all familiar with the colors that we use to fill our spaces impact us psychologically. While bright colors like orange can provide a much-needed burst of energy, and earth tones make us feel more grounded — sticking to one color palette helps create a soothing and restful environment. →





Research by The University of Texas found that websites with a monochromatic background palette were easiest for others to read. They attribute these findings to the fact that the brain has less to process and therefore is able to better concentrate on the website's content. You can take this same principle and use a single color palette to showcase your space's best features.

Since monochromatic designs have such a relaxing effect, it's often utilized in spaces that need an extra calming boost. Bedrooms are, of course, an excellent option, as are those too-often-stressful home offices. But you shouldn't be afraid to branch out a little — experiment with monochrome in your bathroom to create a spa-like feel, or use it in your children's playroom to help keep all that energy at bay.



Since monochromatic designs have such a relaxing effect, it's often utilized in spaces that need an extra calming boost.

How to rock monochrome in your home:

The words "monochromatic design" might still feel a little worrisome. Maybe you're picturing a room where the sofas blend into the walls and every element of the room is the exact same shade. I'm going to let you in on a secret: Monochromatic interior design offers plenty more than just a single shade.

Since the shades in your interior will tend to blend together, texture and pattern are the easiest, and often one of the cheapest, ways to add visual interest. In fact, while too many patterns are usually a design no-no, monochrome is an occasion in which you can let your mixing-and-matching skills run wild. →







“If you’re uninspired by neutrals, natural materials can work in much the same fashion.

As you pick out the design elements that fit your room, be careful to ensure that the undertones, or the yellow, green, pink or blue hues that stand out in a color when it’s hit by when hit by the light, match. Two design elements with separate undertones will not look right when placed side-by-side, but similar undertones can “match,” even when their patterns or textures vary greatly.

It’s also best to think of the unifying color palette as the base of the room rather than the whole picture. Think of it as a pie; the color you choose to follow isn’t the entire pie – just the filling. But no pie is complete without the crust. In this case, the “crust” is the neutrals and complimentary accents. Focus on complimenting your main color with a variety of neutrals; Pops of white and black give the eye a place to rest from the intensity of the main shade.

If you’re uninspired by neutrals, natural materials can work in much the same fashion. Use wooden furniture to break up your bedroom or a set of ultra-modern metal chairs to making your dining space really stand out.

Whichever group you choose, just be sure to provide plenty of coordinating pops throughout the room. Not only will they provide that always-essential visual interest, but they will pull the room together to give it a professionally-designed feel.

Single color spaces are often the subject of heated debates. Some think they’re too simple to be worthwhile. But, when done correctly, we can attest that they are the epitome of easy elegance.

How a Showroom Becomes a Showplace

A new unique conceptual design by Arman Gouniaei | Art Decoline Design Studio



Arman Gouniaei of Art Decoline Design Studio, a valued BDAA member, recently dazzled us with his incredible design of a stunning, sustainably designed new natural stone showroom for importer and distributor Lux Marble's new warehouse and storefront located in Zetland NSW.

Lux Marble's mission was to create the largest and most luxurious high-end showroom in Sydney to present and display their various natural stone products, including tiles, pavers, slabs, basins, granite, basalt, a new generation of high-density terrazzo and highlight the latest Italian technology sintered stone (LAPITEC). To fulfill and realize this mission, Gouniaei's design goals included fitting the large showroom of approximately 700 SQ with unique custom displays that incorporate lighting to enhance the products' natural beauty. Additionally, the design spec included the objective to create a walkway of luxury for customers where they could view the products as presented in exquisite fashion throughout the showroom. The brief also included the need to incorporate consultation spaces where sales staff could serve their customers.

The main goal overall was to design and create a one-of-a-kind showroom that encapsulates the awe often associated with museums and galleries by displaying natural stone products in a way that invited the customers into a world of elegance and luxury. The project brief included the creation of unique solutions for displaying products, taking into account safety considerations due to the heavy weight of the displays without taking away from the beauty of the products.

This spectacular project is sure to set the standard for commercial showrooms everywhere. In addition, it will ensure that Lux Marble sets itself apart from its competitors and can market its high-end and exclusive products to its valued customers.

This is how a showroom becomes a showplace! →







Lux Marble's mission was to create the largest and most luxurious high-end showroom in Sydney to present and display their various natural stone products

DOLOMITE

TRAVERTINE

SANDSTONE

GIAMMITE

GRANITE

PORCELAIN

HD TERRAZZO

SLATE

This spectacular project is sure to set the standard for commercial showrooms everywhere.



Minimal style appliances shown here

THE BEAUTY OF CHOICE

The kitchen is an increasingly social space, yet design aesthetic can be a very personal choice. Our appliances are crafted to give you absolute design freedom.

FISHER & PAYKEL

fisherpaykel.com

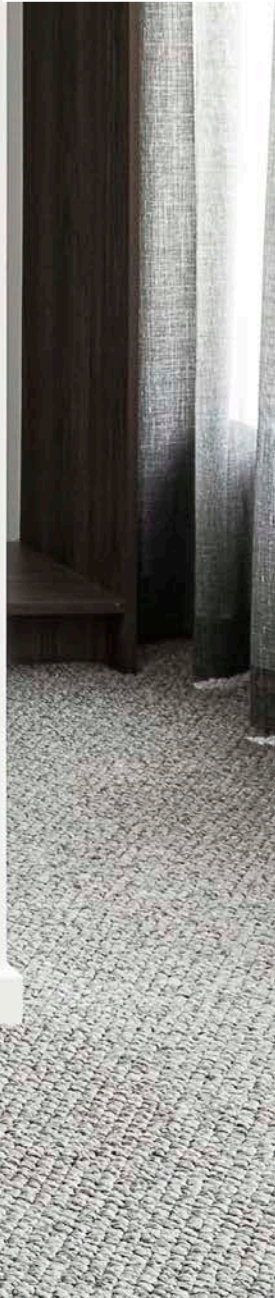
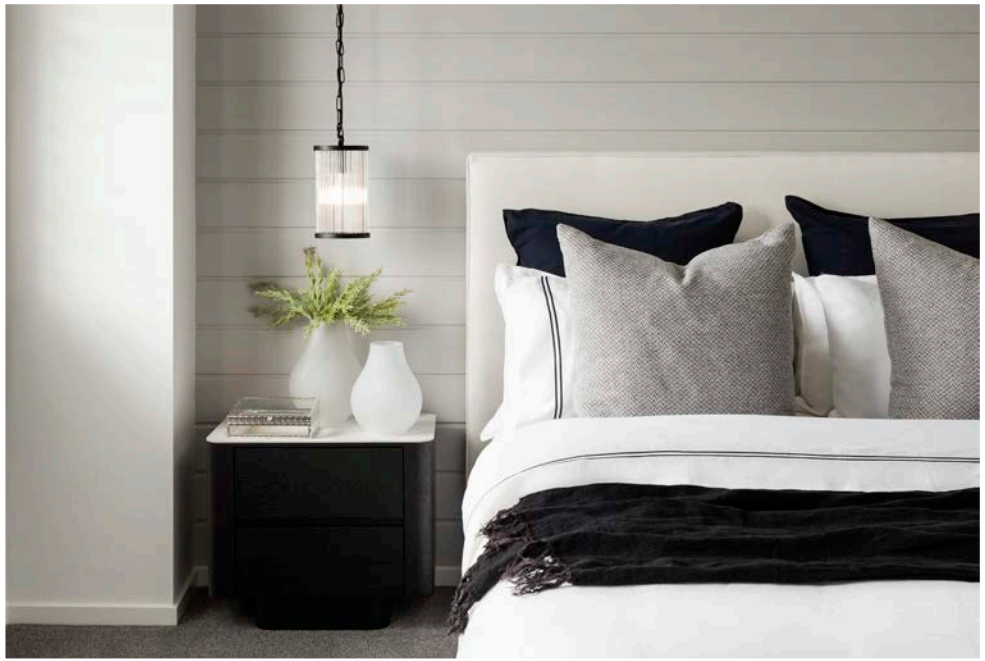
Inner Sanctuary with Weathertex... naturally

With the pandemic forcing many of us indoors throughout 2021, perhaps now, more than ever, we seek to create or renovate our interior spaces into the ultimate inner sanctuary – one that not only looks fantastic, but also is functional, safe and promotes our wellbeing.









Creating a tranquil abode goes beyond your design aesthetic and objects within a space; it starts with simple, mindful practices that allow you to feel stress-free. It's human instinct for us to appreciate and be attracted to the charming beauty of nature. There are countless ways to foster a sense of inner calm through earthy pieces such as natural stone, bamboo and of course Weathertex.

Weathertex's wide range of natural and primed weatherboards and architectural panels continue to be used internally to create the ultimate inner sanctuary. More than ever, it's becoming crucial to select healthier materials in our homes.

Weathertex has a low VOC, is 100% natural and contains no nasty chemicals such as glues, resins, formaldehyde, or silica. You can rest comfortably knowing that you've made the right decision not only for the planet but also for your loved ones.

Timber cladding is an easy and a cost-effective way to bring any internal room to life, whether it's on walls, ceilings or used as decorative features. Another major reason why a large number of people are choosing Weathertex as their preferred internal lining solution is that wood is a natural insulator, which is great at preventing heat from entering the space in Summer and keeping the cold outside during Winter.

Connecting Spaces

Weathergroove panels are an ideal way of connecting indoor and outdoor spaces, continuous use of the same cladding dissolving the lines between two areas, which was ideal for this beach house.

For You, For the Industry,
For the Future of the Built Environment:

JOIN THE BDAA

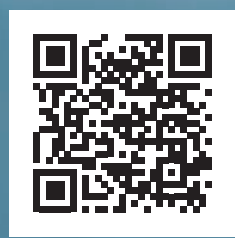
The voice for the building design sphere and everyone who works to fill and define a more sustainable built environment, the Building Designers Association of Australia is a true home for designers and those in related fields.

BDAA offers education, advocacy, representation, national conference and design awards programs, certification, CPD and networking opportunities, and much more.





**Join the BDAA
today for a
brighter, more
sustainable
tomorrow.**



LUXPVD Provides Superior Finish

If you've not yet discovered Hunting For George, you could be missing out on a whole heap of helpful insights when it comes to interior design and decorating. Co-founder and self-proclaimed raconteur **Lucy Glade-Wright** created the online platform to be the go-to source of inspiration for home, design and lifestyle.

Recently, Lucy renovated her own family bathroom and trusted Reece Bathrooms to supply all fixtures and fittings. Reece's Scala range is a collaboration with Australian tapware manufacturer Sussex, bringing together a gorgeous collection of tapware and accessories in LUXPVD finishes. Upon completion, Reece sat down with Lucy to discuss the project, learning more about the inspiration and ideas behind the finished result.

What had motivated you to embark on this renovation project?

We wanted to future proof an existing 1930s beach house and provide comfortable accommodation for family and friends. The scope of the renovation involved retrofitting the existing home to ensure it met the comfort and durability standards of the new extension.

How has the location of your property impacted decision making around form and function?

Location always has a big influence on the form and function of a project. This home is situated in Lorne on the Great Ocean Road, and we were influenced by the coastal and bush setting of the property. From a functional standpoint we selected products that were best suited to the needs of the house, whilst the design concept drew upon nature and the materials and colours found in the surrounding environment.

What challenges have you overcome when bringing this project to life?

We faced a lot of challenges mostly with delays due to covid restrictions. It was difficult to get products, materials and deliveries on time and not to mention labour shortage. As we weren't building in a major city we had limited access to skilled trades and had to do quite a lot of jobs ourselves. Time management was crucial to help us overcome these challenges and keep the project on track

Did the final result match your vision for the space, and if not, why?

Yes the final result is an accurate reflection of the initial design concept - albeit one bathroom that had a last minute change during the build. For the design concept it was important to us to integrate the new addition seamlessly with the existing house and through the use of colour and materials we've been able to do this. The interior design was split essentially into two levels, the upper level had a colour palette that was warm and classic. Whilst downstairs shared similarities but invited a more energetic and colourful palette. →







Who will be using the space, and how do you envisage the design will impact their mood?

Family, Friends & Other Guests. Overall, the entire house was designed to feel welcoming, each room has a different energy to enjoy but ultimately all the interiors were designed to be inviting, warm and relaxing. I hope that people walk into this house and feel like they've arrived home.

How has working with Reece helped you realise your vision?

Designing an entire house can be overwhelming to say the least, so to be able to work with Reece and break down each room and what items we required was incredibly helpful. When selecting finishes I love being able to see and compare samples and swatches, the Reece design lab was a great way to do this. Aside from the help instore selecting products, the ongoing communication between Reece and our plumber took a lot of the stress out of the install process.

Have any interior trends or design eras been referenced in your aesthetic?

I'm more inspired by colour and texture than trends. I was inspired by nature and I continually referenced this throughout the interiors. I wanted the house to have an overwhelming sense of warmth which was the reason behind selecting gold finishes throughout.

What tools have helped you refine your style throughout the planning process?

I definitely need to improve my planning process as often the designs are in my head rather than paper, so finalising products in the Reece Showroom was definitely helpful to refine my selection.

How will the new design improve the way the inhabitants use and live in the space?

The communal living and dining spaces allow for more comfortable spaces for family and friends to share, whilst the addition of new bedrooms and bathrooms ensure there is also private, quiet spaces for people to retreat to. This was important to ensure multiple generations would be comfortable staying in the home together for long periods of time. The upper level was also designed for single level living in order to further future proof the home. →



How has the functionality of former and/or current spaces impacted your design decisions?

Put simply it was just too small and inefficient. The design was driven by functionality and to future proof the home. We choose high quality materials throughout in order to ensure the home would last for future generations to enjoy.

Which Reece fittings, fixtures or installations are you/the inhabitants most looking forward to enjoying?

I'm obsessed with the ensuite in the ocean room. I love the way the brushed pure gold complements the oceanic blue of the tile, the timber richness of the vanity and I can already testify to that shower being as epic as it looks.

When you dream of the finished project at night, what area of the space are you occupying (with a giant smile on your face)?

Honestly? The whole thing! Being able to walk through the entire house once it was all completed was the biggest 'punch the air' moment and I definitely sleep more soundly now that its all completed.

Lucy is particularly fond of the Milli Mood Twin Shower and Heated Towel Rails, finished off in LUXPVD Brushed Pure Gold. She says these would be the products that visitors would be most envious of. The range of colours available in the Sussex manufactured collections are spectacular, and well worth a visit to your nearest Reece showroom to discover the best fit for your renovation or new build project.

Designer: Lucy Glade-Wright

Photography: Jonno Rodd

National Festival of Design 2022
The Rebuilt Environment

Trade Show

for building designers

This trade night will be a dynamic showcase for the latest and most technologically advanced building supplies and products, presented by top manufacturers and suppliers in the Australian building design industry.

See, touch and try a full array of cutting edge building design products and services.



27th October 2022, 5pm-8pm

Big Plans
109 Munster Terrace
North Melbourne, VIC, 3051



REGISTER

Design Inspired

BY REGGIO EMILIA

Written by Bronwyn Aldridge, Bronz DC
Designer: Edwin Vanegas, Five Canons

After completing a building design project for one of his residential clients in the late 2010's, Edwin Vanegas, of Five Canons, soon found himself collaborating on a commercial project in childcare, one which his client was already involved in. Vanegas had prior experience in this type of project, having completed his first childcare design back in 2014. However, this new project was intriguingly different... it looked to raise the standard of childcare centres and how they function, therefore how they impact the children in attendance. These operators were embracing the Reggio Emilia Approach® for their development. →







The idea for these Victorian based facilities is that they are all open plan, even right down to the ablution area.



Google summarises the Reggio Emilia Approach® to education as a 'student-centered and constructivist self-guided curriculum that uses self-directed, experiential learning in relationship-driven environments.' While this approach has traces back to the 19th century, it is seen as a relatively new concept in the Australian landscape, but one that is gaining momentum.

After months of planning, team cooperation and a global pandemic, Five Canons were able to show off the fruits of their labour with two wonderfully completed Victorian childcare centres, located in Mornington and Ballarat.

It's All About Interaction

Traditionally, childcare centres are made up of various rooms or partitioned areas to segregate different age groups or activities. The idea for these Victorian based facilities is that they are all open plan, even right down to the ablution area. While some have frowned or challenged the concept with main concerns around unpleasant odour and excessive noise, most are adopting the new way of thinking, providing positive feedback having experienced these new facilities.

Edwin describes the intention, "It's all about interaction. It's all about trying to mimic the real world where there are distractions, there are other age groups, there are different things happening all around you and being able to bring up a child in that sort of environment where it mimics what could potentially happen in the real world."

There are controls in place whereas different zones hosting age-appropriate activities can still take place, however similar age groups can certainly interact with each other more freely. The ablution block separates these different areas in its open format, providing sufficient privacy for getting down to business, but without enclosing any of the spaces. A key element to having this concept work was the sufficient and thoughtful placement of air supply and air extraction vents, one of the primary concerns from naysayers. The installation of these vents, particularly around toilet and wash stations, contributes to the success of this open plan design.

Thought was given to surrounding areas of the childcare, such as the entry foyer. Imagine a dual use piazza with an outdoor area, "it's a great centre point after parents sign in, for parents to come and meet, talk, greet and socialise... grab a coffee, let their children run around, so it helps the kids let go at that point from their parents." Edwin illustrates. →

From Garden Nursery to Play Nursery

Both the Mornington Childcare completed in 2019, and the Ballarat Childcare completed in 2020, belong to the same developer who had purchased a small group of warehouses previously occupied by a large hardware chain. Upon describing Five Canon's involvement, Edwin explains, "our scope was to use that space to design centres from the ground up. We were very close to all stakeholders throughout the projects. We had to coordinate all of our consultants to make sure it worked out."

The former nursery gardens became home to nurseries of a different kind, with their undercover areas transformed into the ultimate indoor/outdoor space. Edwin says, "the old warehouse nursery have a lot

of roof space over it, so we had to open it up to let a lot of sun in, so we basically stripped out that open space of nursery and built our form within a form." He continues, "so we had to think about how the existing structure works with the proposed structure and how it all ties together aesthetically and structurally. And also, just keep to the theme, the client had a strong influence on how they wanted the form to work and how they wanted it to look."

Natural light is a huge component when designing a childcare facility, thus the installation of large glazing banks topped with gable highlights meant that ambient light was aplenty. The gable windows also provided additional light when the awnings to the outside shaded the ground level glazing. Low E glass was utilised for thermal performance while managing budget.



Safety and Aesthetic Combine

The choice of light pastels was an intentional directive from the client, reinforced by designer, when choosing how to decorate the interiors. Various blues, greens and pinks were utilised for designated areas, while light oak timbers in chalk texture provided a calming environment for children and staff alike. Laminex provide a great range of durable melamine and laminate for such a high traffic setting, which pairs nicely with the flooring selections. Edwin comments, “choosing a less complex palette was key for us and sort of just keep it simple, not be overbearing with too many colours going on. And at the end of the day, we like timber, and those light-coloured timbers and veneers, so we kept that going throughout.” Although colour stopped with the strawberry shaped toilet suites. While the ‘Egg Junior’ range Johnson Suisse does come in different coloured cisterns, the white ultimately provided the desired aesthetic for the ablution area.

Other functional features include integrated vanity basins at child friendly height, sensor taps for ease of use and vinyl flooring for ease of cleaning. But it was safety compliance that needed to be adjusted beyond a regular commercial fit out, specifically considered for adventurous little humans. Power outlet placement is an obvious item, pencil round edges to benchtops another, and appropriate door handle heights to stop the curious wanderers from accidentally fleeing. “There are regulations around them like making sure they are at a certain height off the ground so the children can’t just walk out, and there are certain regulations around how they operate and where they’re operable from” Edwin refers to the clever concealed latches that sit inside cabinet doors, only accessible via a small round hole to poke one’s finger through to pick the latch. Coincidentally, these nifty mechanisms also contributed to the overall minimalistic design whilst keeping children out of harm’s way.

In addition to meeting regular construction codes, the Department of Education also had regulations to abide by, such as the provision for adequate internal and outdoor space. While working with so many third parties to meet compliance and satisfy the brief, Edwin says, “it was a good challenge and a steep learning curve working with the project managers and it taught us how to work under extreme pressure with time constraints.” The key to success for this project was doing a good job of managing time and coordination between all parties.



Five Canons are now certainly well-versed in the childcare arena, having worked on multiple traditional and new age concepts for various developers for the past 8 years, so much so it has become their bread and butter over and above residential projects.

When adding final comments pertaining to these open plan facilities, Edwin shares, “these projects have been standouts, much more exciting visually and the interactive side of it. There’s a buzz, and it doesn’t really matter what age group they are, there seems to be this greater activity of interaction between them.”

Assisted Living

BY HAFELE

As humans, we long for connection, inclusiveness and for independence and freedom of choice: The Assisted Living Range by Häfele supports exactly that. We want to assist in helping people to live an independent life whilst also creating spaces that everyone can enjoy and work in together.

Discreet, effortless, and ergonomic Häfele's FlexiElectric Bench is THE solution for projects that require adjustable working heights like aged care, training facilities, education, and specialist disability accommodation. Häfele's FlexiElectric benchtop is a discreet solution that provides 300mm range of motion to adjust working height from 720mm – 1020mm at the touch of a button, meeting SDA guidelines and offers designers complete choice of benchtop material. The Häfele FlexiElectric benchtop is easily integrated into any interior design scheme as installation details, legs and hardware are cleverly hidden whilst the user adjusts the worktop via simple button control.

As well as benchtop options Häfele provides wall cabinet fittings that come to you such as the Verti Electric, Verti Inside and Verti diagonal and all controlled with the touch

of a button. All electronic driven fittings are supplied with safety stop plates to avoid the risk of trapping. The safety strips ensure benchtops don't just stop but reverse their movement immediately when the safety strip is activated. The Assisted living range also includes products such as Kitchen storage accessories, pull out corner units and pantries, integrated waste bins, soft close and opening drawers, appliances, sinks & taps, ergonomic furniture handles and LOOX LED lighting systems for intelligent and wireless light control.

Häfele's auto door solutions for accessibility, prevent the door from being a hindrance. Swing door systems make it easier to pass through a door whenever manual operation is too cumbersome or exhausting. They are distinguished by their absolute reliability and safety, as well as by a clear modern design line.

Additional products provide ease of use for wardrobes, bathrooms, sliding doors as well as for education and the workplace. Häfele provides a comprehensive 360° project services to specifiers, planners, consultants and specialists in architectural hardware, furniture design and access control.

Services include detailed planning manuals, seminars for planners addressing special topics, tendering texts, application examples and suggestions CAD files and other planning support such as the Häfele TEC service for standards and instructions available at www.hafele.com.au

Specifiers can also make use of our team of experienced sales consultants who can provide a wide range of functional and design options.





www.assistedliving@hafele.com.au
HÄFELE AUSTRALIA PTY LTD
Phone 1300 659 728
www.hafele.com.au

Psychological and Somatic Interiors

Written by Bronwyn Aldridge, Bronz DC

Designer: Moda Interiors

Photographer: Joel Barbitta, D MAX Photography

A common misconception is the belief that Interior Design services are expensive for what you get. We just fluff cushions, right?! We welcome you to step inside a day in the life of an experienced Interior Designer, as you'll soon realise that money spent on a home's interior is money well spent if you appreciate ultimate living conditions, over and above a pleasant aesthetic.

In a recent conversation with Izabela Barakovska of Moda Interiors, we opened dialogue around two of Moda's beautifully completed West Coast projects. It didn't take long before we found ourselves deep diving into the unspoken yet crucial principles of design that go well beyond the physicality of colour, shape and texture.

More than Choosing Furniture

Typically, design operations begin their client journey with a consultation of sorts to establish needs of their client and learn of the brief. In my experience, some do this better than others. And in my opinion, the success of a project is determined by the quality of information extracted during this initial consultation. For Moda, their focus is heavily client based and less Designer driven. "In terms of actual design, all of that is very malleable around the client. What are their lifestyles? What do they need?" Izabela continues, "all of this is outlined in the initial briefing, to figure out as much information about them and their lives as possible, and then how that needs to translate into a home."

We heavily discussed how a Designer's role was not just to choose furniture and make the home look pretty. In fact, this is just the icing on the cake that comes together a little later in the process. Prior to decoration, thought must be given to how every internal space lives in accordance with what was discussed in the initial briefing or consultation. For example, are there young children that require rooms with less stimuli to calm them at certain times of the day? Or perhaps the homeowner is partial to the cold and therefore temperature control is of high importance. An intricate detail taken from the client's preliminary commentary will be the difference of whether a dwelling is just a house someone lives in, or a home that they love to occupy.



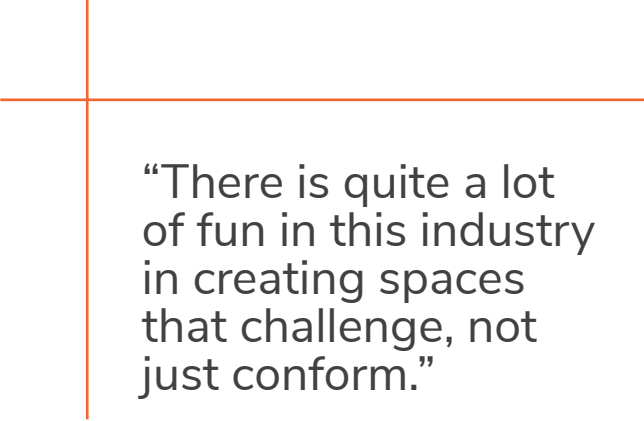
A great example of this is in the master bedroom of Moda's City Beach project. A striking ceiling vault not only provides an interesting architectural detail, but it's position over the bed was an intentional decision to deliver subtle integrated lighting, which offers a cool calmness and intimacy, helping the resident ease into their nighttime ritual.

Talking from experience, Izabella says, "to live in that kind of space, it really influences your nervous system and really creates such a sense of calm. To put that there in the space, where if you need to obtain rest, it's definitely a strategic lifestyle choice rather than just one where it's supposed to look pretty."

The functionality of a space extends to door and window placement, ceiling heights, lighting as previously mentioned, and of course thermal performance – an element which we tend to think about on a broader scale. Most homeowners have cottoned on to the need for northern light in the home for winter warmth and general sense of spaciousness. Professional advice goes beyond that to ensure the building itself is constructed using effective building materials, placed in alignment with the correct orientation, all in the name of providing ongoing relaxation for occupants. However, clever design takes things further again. In this same beachfront home, consideration has been given to the exact placement of each air duct in every room. →

Izabela elaborates, “in terms of where the vents are, the choice for it to not be right over their heads will be intentional too because there is quite a bit of force to the air-con or heating. If you’re in the room, or in bed, or at a desk and it’s right above your head, it’s quite an unpleasant experience. So, with the vent up there if the heating is on, you’re heating the space, you’re not blasting air right onto someone’s head” she adds, “where is the vent going to go and how is that going to impact the lived experience in this space?” It’s questions like these that determine the overall effectiveness of any design component.

These types of considerations only come with experience, and you are paying for that experience when engaging a knowledgeable Interior Designer. In fact, getting these structural and functional components correct in the first instance, will save money in the long run. Izabela adds, “Those decisions are much more costly to correct and that’s when you’re going to lean on the 20 plus years of a Designer, otherwise, what are you paying for?”



“There is quite a lot of fun in this industry in creating spaces that challenge, not just conform.”

Subconscious Influence

When it comes to choosing design elements to decorate a space, you can compile a bunch of material items that look nice when grouped together, something that the client happens to lean toward in that moment. Or you can enquire more deeply into the client’s world to determine what does, and will continue to, make their heart sing. You could describe this as designing to the homeowner’s most valued ideals. Izabela and I discussed how good design really speaks to the subconscious mind, sometimes you can’t even explain why you like, or dislike, walking into a particular room, other than a feeling you get upon entry. When we were musing over photos from Moda’s Dalkeith project, we came across a picture of the homeowner’s study. On paper you could describe this room as a nautical, indigenous, traditional and contemporary fusion, which sounds absolutely appalling! But when you see how Moda have

pulled this area together, it just works. Izabela comments, “it’s quirky in its own kind of way and what I love is that the framed artwork is a colour palette for the rest of the room. From the colour of the desk, to the chair, and even the orange accent on the base of the boat. I love that they’re all contrasting and they’re all different types of traditional; one is traditional indigenous artwork, one is more a traditional Victorian English upholstered chair.” It is certainly not offensive, despite the influence of different genres, and more importantly, it evokes a special emotion inside of the homeowner, one that has him enjoy the space more than what he would have if it featured some random décor.

“There is quite a lot of fun in this industry in creating spaces that challenge, not just conform. They work, and you perhaps don’t necessarily know why at first glance but there is still an underlying sense of comfort, functionality, livability and style to it. Each person is unique so there needs to be an understanding that each home, and each space within the home will be different.” Izabela hits the nail on the head. Personal circumstances, external influences, personal taste... it’s always evolving, faster than the frequency that one would renovate their home. Therefore, the need to connect to something deeper is the difference between a house and a home.

As we continued down the rabbit hole around the correlation between successful design and the human brain, Izabela and I realised why copycat designs inspired by holiday resorts just don’t have the same impact when reimagined in the home... by trying to mimic the design, all it’s doing is reminding you that you are not there at the resort, attaching a negative emotion to the space instead of a positive one. So instead, you bring in elements that remind you of your favourite vacation destinations rather than trying to recreate them in their entirety.

Holistic Collaboration

Both the joy and challenge of working within the residential construction industry is there are several roles to be executed inside of any one project, each with their own intricate nuance. Adding to the complication is that a lot of these roles overlap and rely on another moving cog to have your wheel turn. However, when professionals can collaborate well together, the result is a cohesive and timeless home for the ages. I like to refer to it as working holistically with my affiliates, and Izabela agrees, “holistic in that everyone has their own industry expertise and that everyone thinks a little bit differently, so it needs to be a very open and continuous conversation between clients, designers, builders, and where relevant, suppliers as well. It’s one big, complicated group project because no single decision can be made in isolation.”



For this reason, Interior Designers exist to serve not only their clients, but the Builders, Building Designers and Architects they collaborate with.

We certainly rely on each other's input and execution to attain the best outcome for our mutual client. This is particularly true for structural renovation projects or new home constructions. We were both in agreement that all parties should be involved as early in the process as possible for maximum efficiency and the highest quality. From a Designer's perspective, you want to be across all angles to ensure a home provides as much longevity as possible. Izabela speaks further to this, "you can change linen and furniture, but structurally it needs to be functional in a way that is timeless almost, it is functional now and it's going to be functional in five to ten years." Moda's founder, Kate Barakovska refers to this as "bullet proofing" the home. Ensuring that owners can get continuous use from each of the home's spaces as they transition through evolving stages of their life.

And now more than ever, as we emerge from a pandemic riddled with lockdowns and extra time at home, an increase in appreciation for our own house has cemented the Designer's notion of creating a somatic and psychologically driven direction for their projects. Izabela is enthusiastic about the shift we're seeing post-covid, "for Interior Design in particular it created a really interesting opportunity and a rising conversation of, how does my home make me feel?" If we can connect to something greater than aesthetic and basic functionality, the long-term comfort and enjoyment achieved from dwelling in our own abode does more than stroke our ego, it also has the power to significantly benefit our physical health and well-being.

Evading A Perfect Storm



SIBA Interiors has favoured the versatile and exclusive collections of GlobeWest for several years and has established a beautiful relationship with Perth stockist Roxby Lane, to ensure projects are completed on time with incredible pieces of furniture and décor. SIBA owner and principal designer, Andrea Pienaar, recently put this three-way alliance to the ultimate test when her clients wished to relocate from Victoria to Western Australia amidst the Covid pandemic.

The clients engaged SIBA a year out from their move, providing ample timeline to coordinate with relevant industry professionals in a bid to transform their Perth investment property into a home for themselves. However, with pandemic developments quickly evolving and state governments changing the rules on a whim, the extensive timeline was cut short, leaving Andrea to hustle and rely more heavily than ever on her established connections.

A Well-Oiled Machine

At a time when supply shortages are causing chaos across the construction industry, the efficiency and reliability of Roxby Lane became a saving grace for SIBA Interiors. Manufacturing of furniture, appliances and homewares had particularly been slowed as an effect of the pandemic, making it hard for projects to meet their completion deadlines. Andrea describing the situation “really the furniture industry was the collateral damage I think in a worldwide shortage of all sorts of things.” But the well-oiled machine made up of the GlobeWest brand and local stockist Roxby Lane, meant that Andrea had a solid arm to lean back on.

“They have a really awesome website that shows accurate lead times to the designer, so when I log in I can see if it’s in stock, which means in stock in Melbourne usually, and then I contact the girls at Roxby Lane and they will tell me we’ve got one in Perth, which is even better, which means clients can get it the next day” Andrea describes the ease of using the designer-exclusive online portal. Andrea explains why she loves to use this local team “obviously having that amazing Roxby Lane showroom is another humongous bonus for clients” she continues, “during the pandemic they were really available and usually able to accommodate clients. It sort of ticked all the boxes in terms of me trying to navigate a pandemic environment where we were being thrown obstacles left, right and centre.”

Although the client had provided SIBA with an extensive timeline to work to, this was abruptly cut short with Covid rules changing almost overnight. With this deadline becoming fast tracked, Andrea felt the heat as the client suddenly had to make their interstate move by October, a few months earlier than planned. The family of four was now bunking in with parents and itching to get into their own place. Upon reflection, Andrea was happy with how it eventuated in relation to time, “at the end of the day they were in before Christmas and really properly settled I think by the end of January.” There is no doubt that the efficiency of SIBA’s suppliers contributed to this successful undertaking.

“Even if they hadn’t had a shortened timeline, because I rely on the level of customer service and the product from Roxby Lane, they do tend to be someone I source from quite a lot. I love their range; I love the fact that no matter what my client’s style is, I will find something that will fit the project. I think their price point accurately depicts the level of quality you get, which is great. And as well as the fact that they are very supportive of the design industry and the designers in terms of their wholesale rates and their ability to be able to source remotely and know what’s happening with the stock levels. I appreciate that GlobeWest and Roxby Lane are obviously to a design level, they acknowledge us, and they support us really well” Andrea expresses her gratitude.

But sometimes things do go wrong, especially when timelines are tight, and everyone is under pressure. It is how these issues are dealt with that make or break how a project eventuates and ultimately how the client/designer relationship transpires. Having the option to seamlessly replace pieces is a huge part of why SIBA keeps coming back to Roxby Lane as their preferred supplier. “To know that anything that I’m sourcing from GlobeWest, if I do end up finding that it’s damaged or not the right thing and knowing that they will fix it immediately, is so great.” →

Teamwork Makes the Dreamwork

The home itself is a well-built Giorgi construction that the client had sat on as an investment for the past ten years, renting it out while they lived in Victoria. Now a little tired, the client wanted to make it their own by completely gutting the interior and revamping to their own taste.

Therefore, this was no small scale make over. Andrea was hired to project manage relevant industry professionals, in addition to completing her interior fit out. A lot of builders that Andrea approached were in the fortunate position to be picky with their work and couldn't warrant taking on something "too small" for their scope. Whereas it was too big for SIBA to manage themselves. In the end, Andrea called upon good friend and fellow Interior Designer, Jess O'Shea, to help with spatial planning and cabinetry design. The duo has a history of working with cabinet maker come builder, SALT, Andrea referring to the trio as "the dream team."

"I'm really pleased with how it ended up working out in the end, because I don't think it would have been as good a result had I just gone down that builder route and been managing the trades myself, so it actually ended up being really good and it was a really good result for the client which was obviously the most important thing." Andrea acknowledges the benefit of working with familiar businesses and how it can make all the difference. They just get it, and they know how to work in together.

As far as the client brief goes, Andrea states she wishes she could clone this client because trust in the designer to do their job makes for a much smoother process. Albeit the client was very organised and had their own ideas, "this client was very clear on a particular style" Andrea mentioned that they had already chosen their stone benchtop and that paved the way for the rest of the palette. Using shared Pinterest boards, the distant working relationship was made quite simple and effective in communicating design inspirations. The client trusted SIBA to bring everything together in a what Andrea calls a "modern Australian style." When reflecting on past projects, Andrea says, "I think clients are often really clear on what they don't like and then it evolves from there, but this client was really good in terms of colours and textures that she liked and so it made it easier for me to put it together for the whole house."

With family dynamic in mind, SIBA were designing for a couple of working professionals and their two primary aged sons. This was in the back of Andrea's mind when choosing from the GlobeWest collection. The black Benjamin Ripple dining table was selected to contrast with

"She said they were so stoked and happy, with the client declaring, "I can't believe this is my house" which of course is delightful music to a designer's ears."





the overall lighter palette, intentionally making a statement with the setting's obvious curves. The mixed use of a matching bench with chairs meant that egress and line of sight was maximised. Andrea elaborates further, "it wasn't a huge dining space and because it was adjacent to the hallway, I didn't want it to block off, and I just found that having those rounded corners meant visually and access wise it would have made it a little easier to maneuver around which is also why I made the decision to do a bench versus doing 8- 10 chairs." Andrea said having lived in Melbourne and already familiar with the GlobeWest brand, "the client loved the dining table" as she had seen it and loved it when referring to the oval shape. A bench seat combination with dining chairs, was also more appropriate for the boys to climb on and avoid the dragging of chairs on floors. A GlobeWest rug also helps protect floors against the seating and contributes to controlling ambient noise by reducing echo in the space.

And then there was the sofa situation! No project is without its hiccups and the original sofa selection was one of those. Already chosen, and then becoming unavailable, SIBA and the client had to do an urgent re-selection, which turned out to be no issue thanks to the helpful involvement of Roxby Lane. Andrea laughs because the default decision on the couch ended up being the best fit, "to the point where I can't even remember the sofa that I had selected, you look at it now and I think I wouldn't change anything." It's funny how the "happy accidents" as Andrea calls them, nearly always turn out to be the better option when diverted from the original plan. It was the clever foresight of Andrea in utilising GlobeWest for this project, having showrooms available in Melbourne, as well as the Roxby Lane trade showroom in Perth, lending itself to efficient furniture selections regardless of the client's whereabouts amidst the pandemic shuffle. Andrea last saw her clients in April during their project photoshoot. She said they were so stoked and happy, with the client declaring, "I can't believe this is my house" which of course is delightful music to a designer's ears.

"At the end of the day if they move in and they feel like it's their space and they can own it, and I've not imposed my ideas on them, and it was more of a collaboration than that is always my aim" Andrea revels in her client's feedback.

In what could have been a perfect storm with a wavering timeline, limited trades and potential supply shortages, this project is evidence that establishing sound relationships between designers, builders and reliable suppliers is key to a timely and successful renovation. It certainly pays to engage a professional outfit, not just for their individual talent, but for their entire network of hosts.

Written by Bronwyn Aldridge, Bronz DC
Designer: IBA Interiors & Jess O'Shea Designs
Furniture & Décor: Roxby Lane (Globewest)
Builder: SALT
Photography: Gathering Light

CEMINTEL[®]

TERRITORY

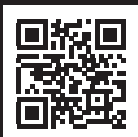
CANYON // **CARNARVON** – ONE OF 20 GREAT FINISHES AVAILABLE



A NATURAL PREFINISHED CLADDING SYSTEM

Derived from the values of simplicity, nature and quality. The new Territory range simulates materials like stone, timber, concrete, metal and smooth render to enhance building façades and interior spaces.

Discover
more



cemintel.com.au | 1300 236 468

CSR

**Boxed in by
a client's
budget?**



Make more space

It's the one attribute every design demands – space. More is better. Space for the kids or the cars or the cinema. Space for the man cave or the cellar. Or just space to breathe.

- Increase design efficiency and flexibility for structural walls
- Simple and reliable way to build above-ground and basement walls
- Cleaner and faster alternatives to pre-cast, blockwork and in-situ concrete.

Make more space with AFS rediwall from CSR

1300 727 237
afsformwork.com.au

The innovative way to make more space

afs

CSR

From Render to Reality

Written by Bronwyn Aldridge, Bronz DC,

We all know a picture speaks a thousand words. When you are a designer with a natural and extensive ability to imagine an interior in your mind's eye, you need to be able to effectively communicate the thoughts in your brain to your clients. Thus, it makes perfect sense that 3D modelling is incorporated into curriculums, so that design students learn how to create visual representations of their concepts. By doing so, a student's chance of securing a new project is more favourable as their prospective clients will understand the design intention clearly and can better understand the designer's ideas and vision for their home.

Student designers from the BDAA have generously shared some of their projects with us, to demonstrate what is possible in 3D representation.

Demonstrating Structural Change

Scott Pearse from BDAA's Sydney Chapter was excited to complete his project in Rose Bay. Scott was lucky enough to find himself with a real-life client for his project, the renovation of a two-bedroom apartment, with only the bedrooms receiving ample light. Upon describing the work, he said "we reconfigured the apartment, dropping a wall and swapping the location of the kitchen and a bedroom." Thus turning a murky kitchen into a light bright space.

He continues, "most of the decisions were made with the low light levels of the apartment in mind, white walls and the porcelain blush pink are the predominant colours of the apartment. It's a warm combination and sits really

well with the greenery out the windows of the trees, that provide privacy to the apartment building next door."

Scott used 3D rendering to demonstrate his concept of the apartment's proposed layout change to demonstrate to his client how the amended orientation would look when complete. Together with the client, they opted for Laminex 'Porcelain Blush' and 'Burnt Ochre' which complemented the Terrazzo features of the benchtop and cabinet handles. This helped adhere to the client budget while providing durable materials. Scott adds, "I value how robust Laminex is. I had peach Laminex countertops as a child and I still think about the battering they took and how well they held up." →





Maximising Orientation

Newcastle & Lake Macquarie Chapter member Nicole Skinner is a 2nd year Building Design student. Her client brief focused on designing a good, single level, family home suited to the climate of the Lake Macquarie area, perched upon a 700sqm allotment.

Nicole wanted to create a good sense of space while adhering to client budget. This has been achieved with a wide entry hall that takes you into an open plan living area. Nearby is an external feature garden which you can enjoy from the multipurpose living room – a quiet and peaceful space with northern aspect. “Energy and cost-effective cross ventilation was also an important aspect I’ve included in this design” Nicole adds. 3D rendering has helped Nicole demonstrate to her client the amount of light that will penetrate the living area with this site’s particular orientation. →



Designing For Self

Now coming to the end of her design studies, Naomi Ruprecht had everything she needed to renovate her own home. Applying her newfound CAD skills really helped Naomi and her husband bring their dream kitchen into reality. “We had been thinking to update our old and tired kitchen for quite some time. We wanted our kitchen to be fresh and add some cabinets to increase storage space.”

3D modelling enabled Naomi and her family to see what the colour selections would look like in place. She says, “the cabinet door colour is called ‘Tropical Moss’ from Dulux – green is my go-to colour. Although the original green I had chosen was little darker, considering the kitchen is facing west and not the brightest area in the house, all the family members agree the light one looked better. So did I.” Naomi did such a good job on her renders, it is hard to separate concept from reality. Upon reflection Naomi says, “all in all, this kitchen reflects who we are and how we live our lives. We are thrilled and happy with the one-of-a-kind kitchen.”





Townhouse Living

Bronwyn Adey is part of the BDAA's Central Coast Chapter. Her assignment was to produce a development of townhouses with a sub-tropical design, which obliged Brisbane's town planning policy. Maintaining thermal comfort and minimizing energy use were of the utmost importance for this project. An open plan allows for ample light and ventilation to circulate throughout the level where there is limited ability for window placement.

Bronwyn further describes her design, "the level above ends just north of the kitchen, allowing for a void above

the lounge. This creates a vast sense of space and light in this room." she continues, "the stairs have been designed to be as skeletal as possible to reduce bulk" which of course also helps pass light while encouraging air movement. All of this can be demonstrated to the client with the effective use of 3D rendering. The client can clearly see the open plan layout with stair placement to determine how they feel about it.

The BDAA says they are proud of all their student members for the incredible work they are producing so early in their careers. If this is the level of output now, the future is looking very bright indeed!

NATIONAL FESTIVAL OF DESIGN 2022

The Rebuilt Environment

A fresh perspective, first-hand insights and countless connections are just some of the things you will walk away with. With an expert content programme jam-packed with leading designer minds and industry power players, this is so much more than just another conference, this event is an immersive design experience!

Thursday | 27th October

Trade Show

5:00pm - 8:00pm | Big Plans North Melbourne

Friday | 28th October

Conference Day 1

9:00am - 4:00pm | Pullman On the Park

Architectural Walking Tour

4:00pm - 6:00pm | Melbourne

Networking Party

6:00pm - 9:00pm | Melbourne

Saturday | 29th October

Conference Day 2

9:00pm - 4:30pm | Pullman On the Park

The BDAA 2022 Design Awards Gala

6:30pm - Late | The Melbourne Museum

Sunday | 30th October

Member Fan Experiences

1:00pm - Late | Various by courtesy bus

Monday | 31st October

Member Fan Experiences

10:00 am - Late | Various by courtesy bus

Tuesday | 1st November

Melbourne Cup Social Event

1:00 pm - Late | Flemington Race Course

27TH OCTOBER - 1ST NOVEMBER

MELBOURNE



MEET SOME OF OUR SPEAKERS

The BDAA National Design Conference has an unrivaled line-up of hard-to-reach experts, industry pioneers and design specialists at the top of their field, all coming together to share the secrets of their success.



PETER STUTCHBURY

Design philosophy



JANE HILLIARD

Enoughness



DR GEOFF WOOLCOCK

What Kind of Australia Do We Want? Measuring Progress beyond GDP



RACHAEL ROBINSON

Change is the new business as usual



PAUL HAAR

New opportunities for building professionals in a climate and bio diversity emergency



DR GRAHAME DOUGLAS

What are the new requirements needed to provide bushfire protection for certain Class 9 buildings?

More information and tickets
bdaadesignfestival2022.com.au



Biophilic Design

INSPIRES BUILDING DESIGN CAREER

Written by Bronwyn Aldridge, Bronz DC,
Designer / Builder: Mark Davis

Mark Davis built his own home over a 20-year period, completing it in May of last year. When he commenced, Mark was navigating a demanding line of work but had a passion for nature and sustainable design. He dubs himself a lifelong 'greeny' and was always keen to build his own place. Early in his build journey, Mark made the decision to switch up his career and became a Building Designer himself. He has now been practicing for over 14 years and with the help of his trade team, has built himself a wonderful property with stories to tell of trial and error, and satisfying achievement.

Mark's intention is to become the type of designer that he would have loved to have had. He endeavours to design something beautiful and sustainable, and to be the rock for his clients through their build process off the back of his own educational and rewarding feat.

Recycled Timbers Throughout

With his home now complete, Mark describes the abode as a "biophilic design", incorporating the outside with the inside, which in turn provides positive psychological effects. He says, "everyone feels it when you walk into the home." The building itself is technically spread over four levels, three of those being habitable. It is a beam and post type construction with solar passive strawbales and various recycled materials throughout. As the site was a subdivision of an old garden block, there was plenty of milling timber found on ground. Mark, having a strong belief in the strawbale method, engaged an Architect who specialised with this, and together they came up with the concept which was to be completed in stages over the years.

There was plenty of re-purposed materials utilised such as the Oregon trusses, which came from a church that was demolished in Sydney. These were planed down to remove the white paint and then installed as internal exposed rafters. Ironbark sleepers bring a differing aesthetic to the interior, featuring as columns for limewash render to organically integrate with at junctions. And then there is the various types of timber throughout the main living areas; Atlantic Cedar and Deodar Cedar clad the walls in the kitchen, creating a beautiful backdrop. The flooring is all bamboo – another sustainable, yet sturdy choice, which came together very easily. Finally, the unfortunate events of a tree collapse onsite, led to the re-use of a Californian Redwood tree to make the ledge around the kitchen, and a set of double swing doors off the dining area. Mark says he walks into the space and can smell the various timber aromas, which contributes to the biophilic design.



A Monolithic Kitchen

The kitchen was the last part of the home to be completed. Taking on a monochromatic palette both in joinery and appliance selections meant that the various timbers throughout the area could remain the hero and the kitchen a subtle addition despite its bold mass. The cabinetry is a combination of Paperock products and steel. Mark reflects on the black Paperock benchtops and island, "loved the product, loved the fact that it was sustainable, and I did up the design to match it in a monolithic look". He acknowledges that the 18mm thick benchtops and island panels are a really hard product, making them a durable choice. →

To contrast the matte surface of the Paperrock, Mark opted for 3mm mill-finished steel plates on the drawer fronts. “It’s got that sheen to it; it’s got that organic blue black colour. In some of the bits of steel you can see the heat colours from where it was forged, so it’s not as monochrome” he describes the steel facades. The handles throughout are hand forged scrap steel, a material Mark really loves.

While adopting a simple form, the kitchen island also houses a sink, cooktop, downdraft rangehood, and beneath the benchtop, a small hot water service. As the home’s hot water service was on the other side of the dwelling, Mark chose this additional unit specifically for his kitchen. With solar panels mounted to the home, the unit is set on a timer to heat during the day before providing that direct hot water supply, rather than having water span the distance of the home.

While Mark’s decision to incorporate a downdraft rangehood was not as effective as he thought it would be, it does pay dividends when Mark is entertaining, “I liked the idea of having a cooktop in the island because if you do have people there, they can sit on the stools and talk to you while you are cooking.” The rangehood rises from out of the benchtop and acts as a splashback, defending his guests from any accidental spatter.

Mark created his kitchen to be a simple and understated design that complement the timber elements throughout the entire main living quarters. It is an appropriate use of materials, colour and texture for this nature inspired home.

“Mark created his kitchen to be a simple and understated design that complement the timber elements throughout the entire main living quarters.”

Learning Curves

As with any owner builder situation, there were plenty of lessons along the way. Remember that Mark wasn’t a Building Designer when he started and was educating himself during the construction. If he had his time again, Mark would have switched out the 100mm galvanized steel Z purlins, which he says in hindsight wasn’t the best choice for passive house design, as they weren’t high enough for ample insulation. He initially installed a roof blanket, which was quickly destroyed by possums and had to be removed. Next was to try a spray foam, however the installers ended up using an inferior product and it ended up a mess. So, resolving this issue Mark made the decision to batten 70x45 timbers under the steel purlins to add more depth while mitigating a thermal bridge. He put PIR foam insulation between the existing spray foam and timber, and then taped it to create an airtight layer.





Keen for experimenting with new ideas, Mark also installed a wax product in the roof to capture energy that was transitioning between indoors and out, in a bid to contribute to the home's thermal performance. The individual pouches of wax melt and harden through the seasons and work in this design predominantly due to the fact they are sitting directly on the Colorbond ceiling. With this immediate contact, the wax plays a role to stabilise room temperature and can adjust the indoor temperature by up to 5 degrees either way. Mark wouldn't necessarily advise this as a standard practice however, there are more cost-effective methods available.

If he has his time again, Mark would have constructed the house differently knowing what he now knows around passive house principles, although the interior would remain the same. Mark is a better Building Designer for his learnings and can thoroughly explain various build methods to his clients off the back of his own building adventure.

As Mark's building journey neared completion, his intention became to finish the home and prepare the property for sale. His children, now early adults are spreading their wings and the home will be too big for Mark to reside. In looking toward the future, "the ideal is gonna be to get land or knock down rebuild, and build a passive house for the next house, but I wouldn't build it myself again. I would get a builder – been there done that." Mark says he would ultimately love to design and build a strawbale passive home.

Upon reflection of the entire process, Mark says, "there's something very visceral about building your own home. I am quite proud of it, which is rare for me." Mark remains humble as his friends continue to remind him of his grand accomplishment. This construction has certainly produced a zealous and compassionate Building Designer to whom Mark's clients will undoubtedly benefit.

Bombshell Blow Dry Bar

The Bombshell Blow Dry Bar is built around a theme of “a new and luxurious way to be your best self”. The salon is the very portrait of luxurious modernity, where clients kick back and relax with a hair blowout while drinking a ‘PeachyPrincess’ cocktail, then further enjoying a full-body massage. Presiding over this fun salon is a team of stylists aptly named the Bombshell Babes.

The team at Atria Designs strived to create a space that breathed life into an outdated space and made way for the arrival of the BOMBSHELL BABES.

To maximise functionality, Atria included nine hair stations, six barseats, three washchairs, two private massage rooms, and three lashbays. The prominent curves, intended to soften the space and welcome, combined with the extravagant colour palette and niches, to wow the clientele and draw people in. This project aligned with Atria Designs’ aim to be a leader in client experience and quality services.

They are honoured to be a part of a project that paves the way for innovative commercial spaces that aren’t limited by the ‘normal’ hair and beauty experiences.

When creating a beauty salon, interior design should take precedence over everything else. →





“The right colour palette can prove to be advantageous. A lot of new customers lean more towards beauty salons with captivating colour palettes.”

The design of the salon is crucial in presenting hospitable beauty businesses

After all, when setting up this type of establishment, you are marketing both style and beauty.

The beauty industry, unsurprisingly, focuses on appearances. This basically means that your salon will often be subject to judgement based on its appearance. Therefore, you should ensure that your décor makes a statement about who you are and what your brand is about.

You can start creating your salon's design by deciding on a theme. The theme will function as the foundation of the furniture, as well as the design of your salon overall. Perhaps it will be a bold retro style, or is hot and sexy similar to Bombshell Blow Dry Bar. When it comes to choosing one, it is important that you remember your target clients.

The theme should match the taste and preference of the majority of your clients. Additionally, various factors – like the colours, decorations, and music – should align. For instance, bright colours match up with lively music. Above all else, coordination will help cement the atmosphere you desire more quickly.

The right colour palette can prove to be advantageous. A lot of new customers lean more towards beauty salons with captivating colour palettes. It's human nature to gravitate to a colour that they identify with. Therefore, it is an important component when thinking about beauty salon renovation ideas.

Familiarity plays a huge role in drawing the attention of more customers to your business.

Obviously, it is crucial to remember that you shouldn't incorporate all colours at once. An array of hues will give off a cheap look and could potentially be distracting. With that said, you should only use two to three primary colours.

You can move around the palette, but it is imperative that you stick to them. Remember that the colour palette is not exclusively for the walls. In fact, you can easily apply the palette to the furniture, lighting, and an assortment of design items.

When deciding on a colour palette, take note of the following suggestions:

- Select colours that correspond with the theme of the salon.
- Go for colours that reflect the brand and its beliefs.
- Select colours that are different from your competitors.
- Choose colours that your clients prefer or relate to more.

Upgrading your waiting area (aka. the reception area) is vital. This zone is the first section of the salon that your clients will see. Making a good first impression is essential, so make sure that there are no clutters present.

You can expand the reception desk by including concealed drawers for much better storage. Additionally, floor levelling benefits in properly defining an array of areas. Use the appropriate colours that would augment space, too. Furthermore, by positioning your reception desk and primary retail separately, you could potentially boost sales. Customers are more likely to look at products that contain separate compartments.

The more successful salons often have a picture of what their ideal customer is. Moreover, they provide services and price points that will effectively grab their attention. The same concept applies to the design of your salon.

Put yourself in your customers' shoes and ask yourself what you want to see. What are some elements that you prefer to see in a salon? What do you expect when entering a beauty salon? Keep these questions in mind while you are thinking about what elements to incorporate.







Designer: Neche Page

Why timber lighting?

Nothing beats the texture and warmth of natural materials in our homes, and top of the list of natural materials, for most of us, is timber. The grain, the texture, the tone, it all helps bring life to spaces, and to bring a sense of warmth to our home. Adding timber lighting to your home decor is a perfect way to add that feeling of warmth to your home. The feeling of warmth in a space can be just as important as actually walking into a warm room!

How does timber achieve this?

Unlike other materials such as plastic or metal, timber has a colouring and texture that provides a natural “warmth” or cosiness. Each piece of timber is unlike any other, with its own unique combination of colour, tones and features that give it character, and so, in turn, bringing character to your space.

There are some studies that suggest that timber carries with it some properties that are also good for our well-being, including having a calming and relaxing effect, helping to explain that feeling of “warmth” we get from the use of timber in our homes.

There are easy ways to bring timber elements into your home without creating feature timber walls or spending a ton of money on costly renovations. One of the easiest ways to introduce elements of timber is through homewares, furniture pieces, or even through lighting.

Timber lighting by design

The warmth timber lighting can bring to a space makes it an easy choice for making a room look and feel cosy and inviting.

Timber lighting can enhance and compliment the soft design of a space, or it can create a soft edge in a more industrial or modern space. Give a cool space warmth with timber lighting, or an “artificial” space an organic feel.

By its very design, timber can help to compliment, or to offset, other design features in your home.

Timber lighting by nature

As a natural element, timber lighting can have the effect of “bringing the outdoors in”. Most modern Australian homes are built around the idea of living indoors and outdoors, and so, always looking for ways to draw elements from one to the other to give us that feeling of extended space.

By adding a little of the outdoors inside your home, it is also a great reminder that warmer months are not far from reach!

While it may not add to the feeling of warmth in your home, timber lights are also a great eco-friendly solution to lighting!



Other benefits to timber lighting

There are a multitude of benefits to using timber lighting to add that element of “warmth” to your home.

- It is relatively inexpensive compared to the costs of refurnishing or renovating entire spaces.
- It adds a “touch” of warmth to a space without feeling like the space has been wrapped in a warm blanket.
- It allows combinations of elements such as timber lights with touches of metal or iron to compliment and tie a space together.
- By it's very nature, it changes with the light. For instance, a timber light will produce a different lighting effect with a warm white, as opposed to a cool white, light globe.
- It is easily changed out depending on the trend or use of the space.
- It is unique as no two pieces of timber will ever be exactly the same.

If you would like to add a little warmth to your home, speak to TecLED about a timber light to suit your needs and your decor.

TECLEL LIGHTING

t: (02) 93174177
e: sales@teclled.com.au

UNIT 4, 61-71 BEAUCHAMP RD
MATRAVILLE
NSW 2036
www.teclled.com.au

“Adding timber lighting to your home decor is a perfect way to add that feeling of warmth to your home.”

☰ | 🔍 | Smart Home

 Indoor Temperature 
22°C

Outdoor  **30°C** |  Soft Rain

Next 3 Days

 Tuesday	 Wednesday	 Thursday
--	--	---

 **09:56** | **MONDAY**
05/31


LIGHTS

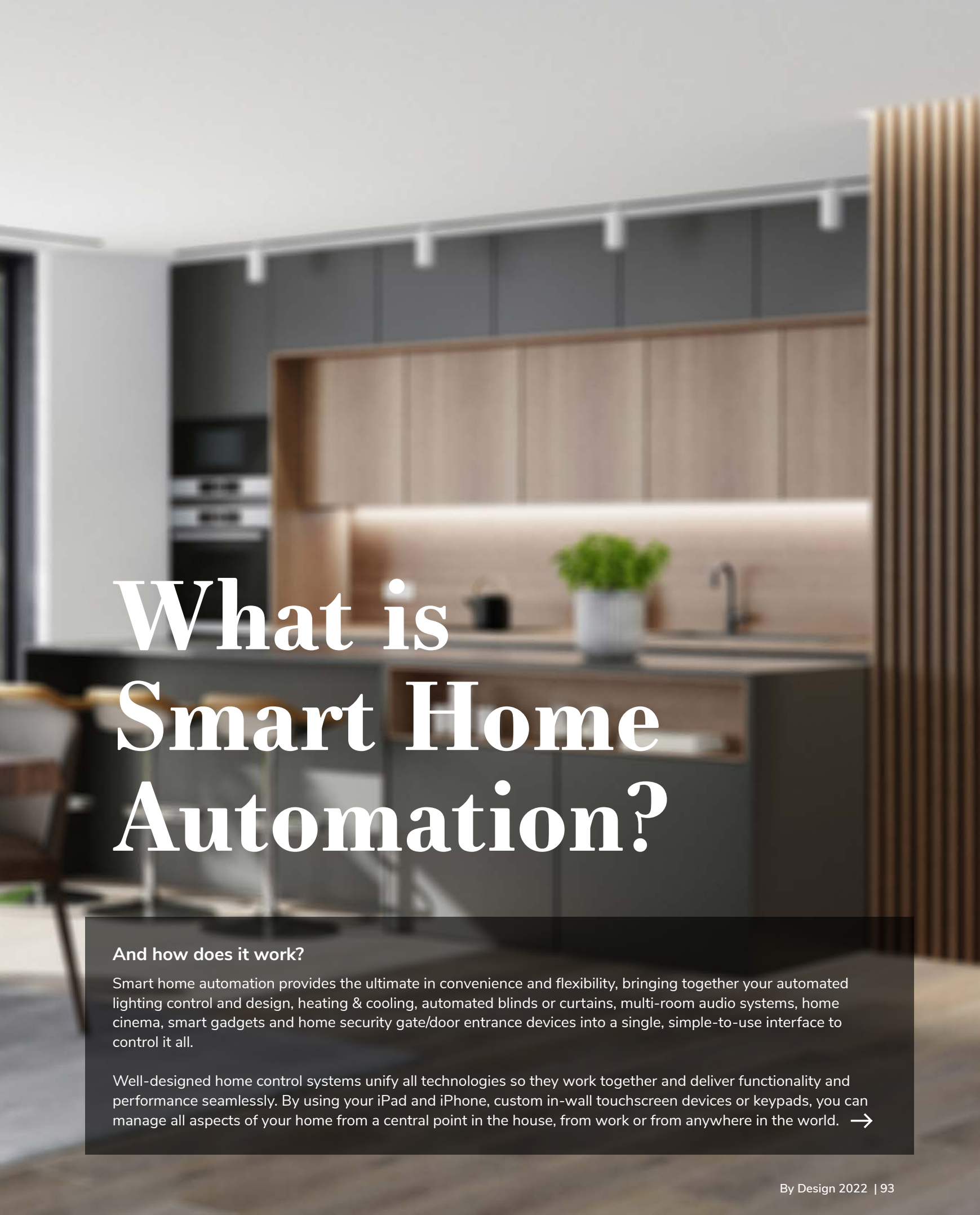

TEMPERATURE


CAMERAS


INTERCOM


DOORS


SECURITY



What is Smart Home Automation?

And how does it work?

Smart home automation provides the ultimate in convenience and flexibility, bringing together your automated lighting control and design, heating & cooling, automated blinds or curtains, multi-room audio systems, home cinema, smart gadgets and home security gate/door entrance devices into a single, simple-to-use interface to control it all.

Well-designed home control systems unify all technologies so they work together and deliver functionality and performance seamlessly. By using your iPad and iPhone, custom in-wall touchscreen devices or keypads, you can manage all aspects of your home from a central point in the house, from work or from anywhere in the world. →

How Smart Home Automation services helps your client?

1. Saves time

We all lead busy lives, so your time spent with loved ones and friends is precious. Our smart home installation services offer you the latest innovations to solve this problem. We intelligently integrate your home or business with the help of advanced electronics and smart technologies so you can control all aspects of your house from a central point. Freeing you from many of your household chores to spend more time relaxing and enjoying your life.

2. Increases property's value

More and more houses in Australia, including renovations and new builds are now designed with a smart home technology in mind. In the future, connected homes will become a priority in every property to make our lives easier and are a great sales feature.

3. Saves energy

One of the greatest benefits of the smart home automation is the energy-saving capabilities it brings with it, saving you money as well as the planet. As our smart home technologies become more aware of the occupants, they can learn from your lifestyle and automatically adjust your energy consumption through heating lighting and automatic blinds or curtains. Room occupancy sensors will turn your lights on when you enter a room, at the correct lighting levels for the time of day, and off when you exit. When you leave the house your smart home system will switch off all your lights and heating. A smart home system, equipped with a smart thermostat and a lighting control system from Lutron can save up to 30% on your annual electricity bill.

With the latest in technology, modern fabrics for smart blinds and curtains can diffuse light and absorb or deflect heat, allowing you to quickly adjust them to keep the warmth in during the winter and in the summer manage heat gain and protect your home from solar damage. With automated blinds and curtains you can either programme your blinds or curtains or use in combination with a heat sensor so that they automatically shut when the solar glare or heat is high.

4. Improves security

With smart home integration, your home is now safer and more secure through the connectivity features which provides you with greater access to improved home security, keeping your family and property safe. Thanks to remotely accessible security systems, which comprise of smart locks, CCTV cameras with indoor and outdoor lighting systems, its possible to keep an eye on your home while you are away,

giving full or limited access for deliveries, staff or a friend who arrives ahead of you.

Through an app on your smartphone, you can view your CCTV feeds, ensure that all doors and windows are locked and get notified when any motion is detected. You can even automate advanced presence simulation to mimic the lighting patterns used when your're there, giving the impression that someone is home.

Our home control systems can be linked to your security alarms and can be programmed to alert neighbours that there is a problem, for example, by flashing all the lights when the intruder alarm is triggered.

5. Secures your home network from hackers

With all your smart home automation and connected devices, you need secure home networking solutions which use the latest technologies to ensure the highest level of security available in your home to avoid it becoming hackable. We create a robust, secure internal network maximising the services available to the house/business, supporting current and future use, providing fast, reliable network connections throughout any home, both wireless, as well as wired.

6. Improves health benefits with correct lighting

Adjusting the brightness and the colour of light, we can mimic natural light more effectively, promoting health and well-being. Smart automated lighting systems enable you to manage the lux levels, so it changes in response to the shifting light outside, hence you always have the perfect light level, great for those four seasons in one day!

Lighting control connects lighting to suit the task and time of year, preventing eye strain and promoting well being. Task lighting enables the correct differing levels of light to create a 'scene' e.g. 'cooking scene' with bright lights over the kitchen worktops and cooker, and dimmed lights in the living area to give a sense of warmth and space.

7. Smart multi room audio / visual gives everyone choice

Smart multi room systems provide entertainment for every room in your home, enabling flawless streaming of audio and visual from a central hub. Now everyone has a choice of what to watch or who to listen to. Intelligent multi room systems each room can be controlled independently so you can relax to music in the bath whilst your partner watches a film in the cinema and the children enjoy their favourite TV series in the snug. Our secure and advanced networking ensures no loss of audio or visual quality, and your home control system enables remote access to your music and film library.



HEAT SET TO

18





Everybody loves
• going to the
cinema!



Designer: Reece Keil

Watching the latest films on the big screen makes for a perfect date, a fun family outing, and a relaxed way to spend an afternoon with friends. Alas, COVID-19 had forced theatres everywhere to close their doors to the public! The lights are out, the popcorn machines are off, and watching a film at the cinema isn't possible right now. Indeed, cinema attendance in 2020 was 75% lower than it was the year before! Know the struggle and feel the loss? Well, installing a luxury home cinema room would be the perfect solution. With one of these bad boys at your disposal, you'd be able to enjoy the cinematic experience from the comfort of your own property! And the benefits don't stop there. COVID or no COVID, there are a million and one reasons to specify a designated cinema room within your clients property.

1. It's a Touch of Luxury

We all deserve to treat ourselves every now and again. And, trust us, there's no better way to do it than installing a giant home cinema screen, complete with surround sound speakers and comfy seating solutions! Just like tennis courts or swimming pools, home cinema rooms are a luxurious addition to any property that makes life both easier and more enjoyable.

In effect, you're buying more than just a cinema room. You're investing in your personal image and attaining newfound status and prestige in return. You'll become the envy of your friends, family, and colleagues- all of whom will be chomping at the bit to come around and try the cinema out for size.

2. They Offer Complete Comfort and Convenience

We love going to the cinema as much as the next person. But let's face it, the typical cinema experience isn't without its issues! From sitting next to strangers to trying to hear over their chewing and chatting, there's no shortage of ways it can become irksome.

But you'd never have to worry about any of that if you installed a home cinema room. You'd be able to watch movies at home and enjoy a full, uninterrupted cinematic experience without having to step foot outside. You can sit back, relax and, at the push of a button, immerse yourself in the latest film or series.

3. You Can Watch Films in Full Glory

Any true film buffs will love nothing more than having their own cinema room to retreat to in the evenings. After all, this isn't your typical living room environment. These

purpose-built cinematic spaces take your standard TV/ settee setup to a whole new level.

Why have a home cinema room, then? To bid farewell to that tiny, low-resolution screen! Opt for premium home cinema solutions and you'll get nothing but the best in terms of visual and sound quality. The latest technology (think huge ultra-HD screens, speakers, and lighting solutions) allows you to watch your favourite films, TV shows, and sporting events how they were designed to be viewed.

4. Catch Movies on the Day of Release

Gone are the days where cinemas would have premium access to movies on their release date, DVDs would come out 6 months later then 'catch up' TV or on-demand players would finally get hold of recordings a year down the line!

With platforms like Netflix and Apple TV now gaining access to premiering films on the same days that cinemas like Vue and Cineworld do, there's literally no reason to leave your home for a movie experience ever again!

5. They Create the Ultimate Video Game Experience

The term 'home cinema' can be a little deceiving. These luxury additions to your property don't just let you watch motion pictures when you feel like it. You can think of them as bespoke, high-end home theatres that accommodate every type of screen-based entertainment.

That's why gamers have as much incentive to install one as film lovers! Hook your console of choice up to the home cinema and you're in for a treat.

Imagine playing your favourite games in ultra-high-definition, with surround sound and atmospheric lighting. It brings the graphics and overall gaming experience to life in a whole new way. You'll feel immersed in the narrative like never before and, with an enormous screen at your disposal, never have to worry about tiny split screens in multiplayer mode.

6. You Can Watch Sporting Events on the Big Screen

The same goes for televised sporting events. There's nothing better than sitting back, cracking open a cold one, and watching your favourite teams on an enormous 4K, Ultra High Definition screen. Whether you want to watch the Champions League Final, the latest tennis Grand Slam, or a rugby fixture, it's like having a front-row ticket to the game!

You see every little detail, catch every play, and feel so close to the action that you might as well be in the crowd. And, if you do miss something, you can simply pause, rewind, and re-watch what happened. Of course, when the lockdowns eventually lift, you'll be able to invite your friends and family around to catch the game too (post Covid restrictions, of course!).

7. You Have Total Control

Everyday cinema-goers have no control over proceedings. Whether they need a bathroom break, a refill of popcorn or a top-up of frozen fanta to wash it down, they're forced to step away from the screen and miss out on the action. There's no way to pause the show, turn the volume up or down, add subtitles if they need them or manipulate the lighting in line with their personal requirements.

More to the point, they have to work around the cinema's schedule and the time of day each film's shown. If you can't make it, then too bad, you're forced to wait for another time that aligns with your calendar. In worst-case scenarios, you might miss out on the big screen experience of the film altogether.

That all changes when you have a home cinema though. This is your domain, your space, and your show. You have complete control of when, how, and what you watch.

8. You Can Customise the Space

Another element of control pertains to the space itself. In other words, you get to dictate each element of your home cinema room's design. Everything from the area you choose to renovate in your house to how it's laid out and the

equipment/furnishings inside is your call.

Of course, you could also choose to leave these decisions up to the designers and engineers in charge of the project. Work with an award-winning company like ours, for instance, and we'll send around our expert technicians to assess the space you have in mind.

We'd then work hard to bring your vision to life. We'll use the latest technology, lighting and acoustic techniques to create the ultimate home cinema experience. Yet it's collaborative from the word go, with you leading the way on what you want.

9. They Provide Ideal Family Entertainment

Ultimately, anybody who installs a home theatre ends up with a supreme way to stay entertained in the comfort and safety of their own house. You can watch movies, binge on the latest Netflix series or view the latest David Attenborough documentary, all in unparalleled, cinema-style quality. You can hang out as a family, invite friends over or get some much-needed personal relaxation time whenever you want it.

This is a prize advantage of home cinemas at the best of times. Yet nowadays, given the obligation to stay indoors, it's more valuable than ever before. You can bid farewell to boredom and appreciate what people mean when they say 'staying home's the new going out'.

10. They Boost Your Property's Value

For all of these reasons and more, home cinema rooms make attractive additions to any property. The result? If/when you come to sell your house, you should:

- Attract more attention from prospective buyers
- Sell it faster as a result
- Get more money for it!

To put it another way, home theatres function as investments. Alongside the joy they bring on a day-to-day basis, they actively increase your home's resale value. It's akin to getting a discounted home cinema in that you'll recoup a significant amount of the installation cost whenever you sell the property.

Be aware that not all home cinemas are made equal though. To reap this particular benefit, you'll need one that's been well-designed and expertly installed. Throw in the latest technology and you're onto a winner.

Large windows

BRINGS THE OUTSIDE IN



Designer: Reece Keil

As you start the design process for your new clients home, consider adding large windows to the plans. Windows are an essential part of the architecture, and there are numerous styles and sizes from which to choose. However, glass walls offer a host of benefits not found with standard windows. Sliding glass walls are energy-efficient, they can make a small room feel larger, and they create indoor/outdoor living space. Not only that, they add beauty and charm to your unmatched home. Here are six of the top reasons to choose large glass windows for your home.

1. Large Windows Bring in Natural Light

Floor-to-ceiling windows bring in an abundance of natural daylight that makes a home seem more inviting. Studies have shown that people enjoy spending time in sunlight areas and actively seek areas where they can get the most exposure.

Studies show that natural daylight is proven to elevate energy and boost moods. There are many ways to add natural light to your home.

Natural light is also a great source of Vitamin D. This mineral is essential to helping the body regulate its immune system, controlling allergy symptoms, and maintaining healthy brain function.

With sunlight streaming into the rooms, you don't need to use lamps during the day. Floor-to-ceiling windows that open allow light to flood the interiors of the home, cutting back on energy consumption and electricity, and thereby reducing energy bills.

2. Large Glass Windows That Open Bring You Closer to Nature

The vast expanse of large glass windows brings nature indoors so you can have a deeper connection with your surroundings through biophilia.

Floor-to-ceiling windows become the main focal point of a room, allowing you to capitalize on the views of the surrounding landscape.

Being so close to nature is calming and restful. The large windows provide a beautiful landscape that you get to enjoy year-round.

3. Large Windows Give You Indoor/Outdoor Living Space

With floor-to-ceiling windows that open, you have both an indoor and an outdoor living area. You can open the windows to provide a seamless transition from the house to the outdoor living area.

Installing these beautiful windows gives you more entertaining space. No longer will they feel cramped inside. Your guests will have more space to move about and mingle with the other guests. Large windows are great for decks, porches, and patios, or expanded entertainment space off the living room or kitchen area.

Indoor/Outdoor living also helps bring the family together to enjoy the outdoor living space.

Large glass windows also help create a relaxing space to enjoy some leisure time. In warmer weather, you can entertain friends and family, or simply relax with a book.

The flexibility provided by large opening glass walls offers numerous choices for entertaining and day-to-day living.

4. Large Windows Provide Passive Solar Heat

Well-positioned large windows and glass walls can contribute to passive solar heat. With passive solar heat, the windows capture heat from the sun and distribute it throughout the home. Passive solar heating provides outstanding user comfort as there is little temperature fluctuation. Utilising passive design can help use your surroundings to your benefit when it comes to energy efficiency and output.

By using windows to heat your home, you are using a free, natural, and renewable energy source. By taking advantage of natural heat, you can reduce your dependence on other forms of heat such as gas or electricity.

Ultimately installing large windows will save on your energy bills. →



Designer: Arana Wallenhoffer



Designer: Arana Wallenhoffer

5. Large Glass Windows Give a Spacious Feel

If you have a small and cramped room in our house, a large glass window can give you the illusion of more space. Large windows provide an unobstructed view of the outdoors, which ultimately makes a room feel connected to the outside.

Not only that, installing floor-to-ceiling windows that open connects the room to the outdoors, giving the illusion that the two are one room.

Also, the bright light flowing through the window illuminates the dark corners that can make the room feel cramped.

6. Large Windows Bring in Fresh Air

Floor-to-ceiling windows that open allow fresh air to enter and fill the space with the aroma of plants and flowers from your garden. The fresh air circulates throughout the house and ventilates all the rooms to improve indoor air quality with increased oxygen. Without oxygen, your body must work harder to get the amount required for a healthy heart. Having fresh air in the house will help improve your heart rate and helps improve your blood pressure

We spend almost 90% of our time indoors, yet we may not know that the air quality is often poor and unhealthy.

Our homes often contain allergens and other contaminants that can cause health problems. For example, many homes contain pollen, dust, and mold, among other things that can cause a runny nose, sneezing, and itchy eyes.

Letting in fresh air through floor-to-ceiling windows that open helps to flush the home of unhealthy particles in the air.

FINAL THOUGHTS

Choosing large windows for your new home is an excellent way to benefit from both your indoor and outdoor spaces. You get the scenic beauty of the surrounding landscape with protection from inclement weather. If you are a building designer, builder, or architect, Architectural Window Systems (AWS) will provide aesthetics and performance for your residential design.



NEW DOUBLE GLAZED RANGE.

Have your homes got the **ComfortEDGE?**

Uw from
2.2

Using embedded technology, ComfortEDGE™ is for building designers who don't want to compromise on performance, style and affordability.

Series 753 Sliding Window
Series 755 Awning Window
Series 759 Sliding Door

TAKE A LOOK SEE www.specifyaws.com.au



RESIDENTIAL WINDOWS
AND DOORS BY **DAWS**

It's art that makes the difference



Paintings

Pen & Ink

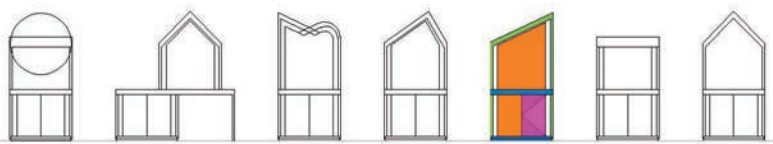
Prints

Murals

Multimedia

Commissions

10% discount for
BDAA members



ART HOUSES BY KYLIE MITCHELL

PH:0407126659

Insta: arthouses.by.kyliemitchell

FB: ART Houses by Kylie Mitchell



INSPIRATION

TO BUILD BETTER

As shapers of COLORBOND® steel we're inspired to make the products that help you build better. Across the exciting spectrum of residential architecture, the aesthetics, performance and versatility of LYSAGHT® steel roofing and walling profiles inspire and give form to exceptional designs. Whether it's contemporary or traditional in nature, you can trust that LYSAGHT® products, in a myriad of materials, finishes and colours, offer you endless possibilities to bring your inspiration to life. And with over 100 years of helping shape Australian architecture, we'll be there to support your inspiration for building bolder, smarter and more sustainably beautiful homes now, and into the future.

References

- ACIF
- Amani Salameh
- Arman Gouniaei
- Atria Designs
- Australian Construction Market Report
- awsaustralia.com.au
- bdda.com.au
- Benjamin Mulholland
- Brigdet McShane
- Bronwyn Aldridge
- colorbond.com
- Dave Bennett
- Elie Sleiman
- Häfele
- hebel.com.au
- SIBA Interiors & Jess O'Shea Designs
- lifestylestore.com.au
- Lucy Glade-Wright
- lysaght.com.au
- Mark Davis Designs
- Mark Penna
- Moda Interiors
- Murray Griffiths
- Neche Page
- Reece Keil
- Roxby Lane
- Sarandy Karagiannis
- TecLED Lighting
- Tony Taouk
- Torren Bell
- Tristan Morphet
- weathertex.com.au





 **weathertex**
a better choice, naturally

